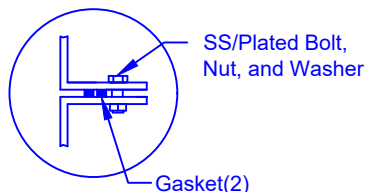


FLANGE CONNECTION DETAIL



## Specifications

Total Cylinder Thickness	0.375"
Total End Cap Thickness	0.475"
Inlet Height (C.L.)	N/A
Outlet Height (C.L.)	48"
Inlet Diameter	N/A
Outlet Diameter	2"
Rib Dimension (C to C)	17.25"
Rib Overlay Thickness	0.250
Layers of Woven (Rib)	1

30"D Cap Lid w/8"D  
Poly screwout insert

Optional Manway:  
762 mm (30") dia. X  
305, 762, 1524 or 2134 mm  
(12, 30, 60 or 84") height

Lift Lug

Flanged Manway is  
Bolted to Collar

762mm (30") dia. Collar  
Bonded to Tank

2"D Outlet

8'-6"  
[2591mm]

Structural Ribs

43.00" [1092mm] 24.00" [610mm] 43.00" [1092mm]

9'-2"  
[2794mm]

Various fittings available  
including bulkhead fittings,  
pipe, flanged fittings, vents,  
etc. at extra cost.

Accessories available such as  
pump stand, 2nd manway,  
ladder, lock bar for lid, etc. at  
extra cost.



Website: [www.frpmfg.com](http://www.frpmfg.com)  
Toll Free: 1-866-722-6246

### B2000W FIBREGLASS WATER CISTERN

Overall Length:	Approx. 2,794mm (9' 2")
Overall Weight:	Approx. 499 kg (1,100 lbs)
Overall Capacity:	Approx. 9,092L (2,000 Imp Gal, 2,400 US Gal)

DATE: 07-07-2022

DWG SCALE:

BY: MPS

REV: 4

BURIAL DEPTH: UP TO 7'

APPROVAL:



Drinking Water  
NSF/ANSI 61