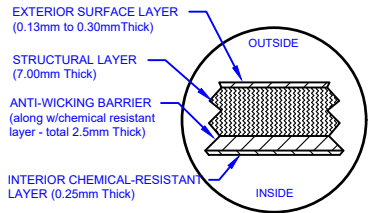


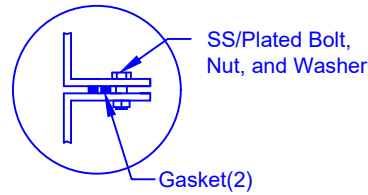
### LAMINATE DETAIL



### SECTION-JOINT DETAIL



### FLANGE CONNECTION DETAIL



## Specifications

Cylinder Thickness	0.500"
End Cap Thickness	0.645"
Inlet Height (C.L.)	N/A
Outlet Height (C.L.)	48"
Inlet Diameter	N/A
Outlet Diameter	2"
Rib Dimension (C to C)	17.25"
Rib Overlay Thickness	0.250"
Layers of Woven (Rib)	1

Structural Ribs

2"D Outlet

8'-6"  
[2591mm]

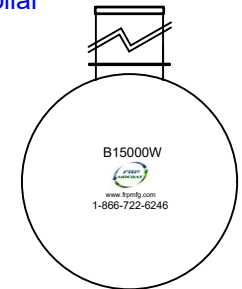
Lift Lug

30"D Cap Lid w/8"D  
Poly screwout insert

Optional Manway:  
762 mm (30") dia. X  
305, 762, 1524 or 2134 mm  
(12, 30, 60 or 84") height

Flanged Manway is  
Bolted to Collar

762mm (30") dia. Collar  
Bonded to Tank



Various fittings available  
including bulkhead fittings,  
pipe, flanged fittings, vents,  
etc. at extra cost.



Website: [www.frpmfg.com](http://www.frpmfg.com)  
Toll Free: 1-866-722-6246

### B15000W FIBREGLOSS WATER CISTERN

Overall Length:	Approx. 15,532mm (50'11" )	DATE: 07-07-2022	REV: 4
Overall Weight:	Approx. 3,357 kg (7,400 lbs)	BY: MPS	
Overall Capacity:	Approx. 68,656 (15,102 Imp Gal, 18,122 US Gal)	BURIAL DEPTH: UP TO 7'	
		APPROVAL:	



Drinking Water  
NSF/ANSI 61