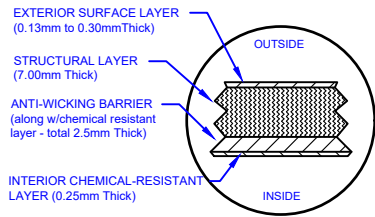


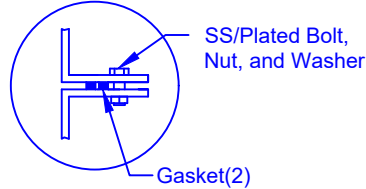
### LAMINATE DETAIL



### SECTION-JOINT DETAIL



### FLANGE CONNECTION DETAIL



## Specifications

Cylinder Thickness	0.500"
End Cap Thickness	0.645"
Inlet Height (C.L.)	N/A
Outlet Height (C.L.)	48"
Inlet Diameter	N/A
Outlet Diameter	2"
Rib Dimension (C to C)	17.25"
Rib Overlay Thickness	0.250"
Layers of Woven (Rib)	1

Optional Manway:  
762 mm (30") dia. X  
305, 762, 1524 or 2134 mm  
(12, 30, 60 or 84") height

Structural Ribs

Lift Lug

30"D Cap Lid w/8"D  
Poly screwout insert

Flanged Manway  
Bolted to Collar

Collar (762 mm  
(30") dia.)  
Bonded to Tank

2"D Outlet

8'-6"  
[2582mm]

51.50"  
[1308mm]

198.22"  
[5035mm]

44'-7"

[13576mm]

17.67"  
[449mm]

17.25"  
[438mm]

198.40"  
[5039mm]

51.50"  
[1308mm]

Various fittings available  
including bulkhead fittings,  
pipe, flanged fittings, vents,  
etc. at extra cost.



Website: [www.frpmfg.com](http://www.frpmfg.com)  
Toll Free: 1-866-722-6246

### B13000W FIBREGLASS WATER CISTERN

Overall Length:	Approx. 13,576mm (44'7")
Overall Weight:	Approx. 2,880 kg (6,350 lbs)
Overall Capacity:	Approx. 59,644L (13,120 Imp Gal, 15,744 US Gal)

DATE: 07-07-2022 REV: 4

BY: MPS  
BURIAL DEPTH: UP TO 7'  
APPROVAL:



Drinking Water  
NSF/ANSI 61