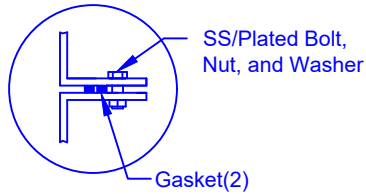
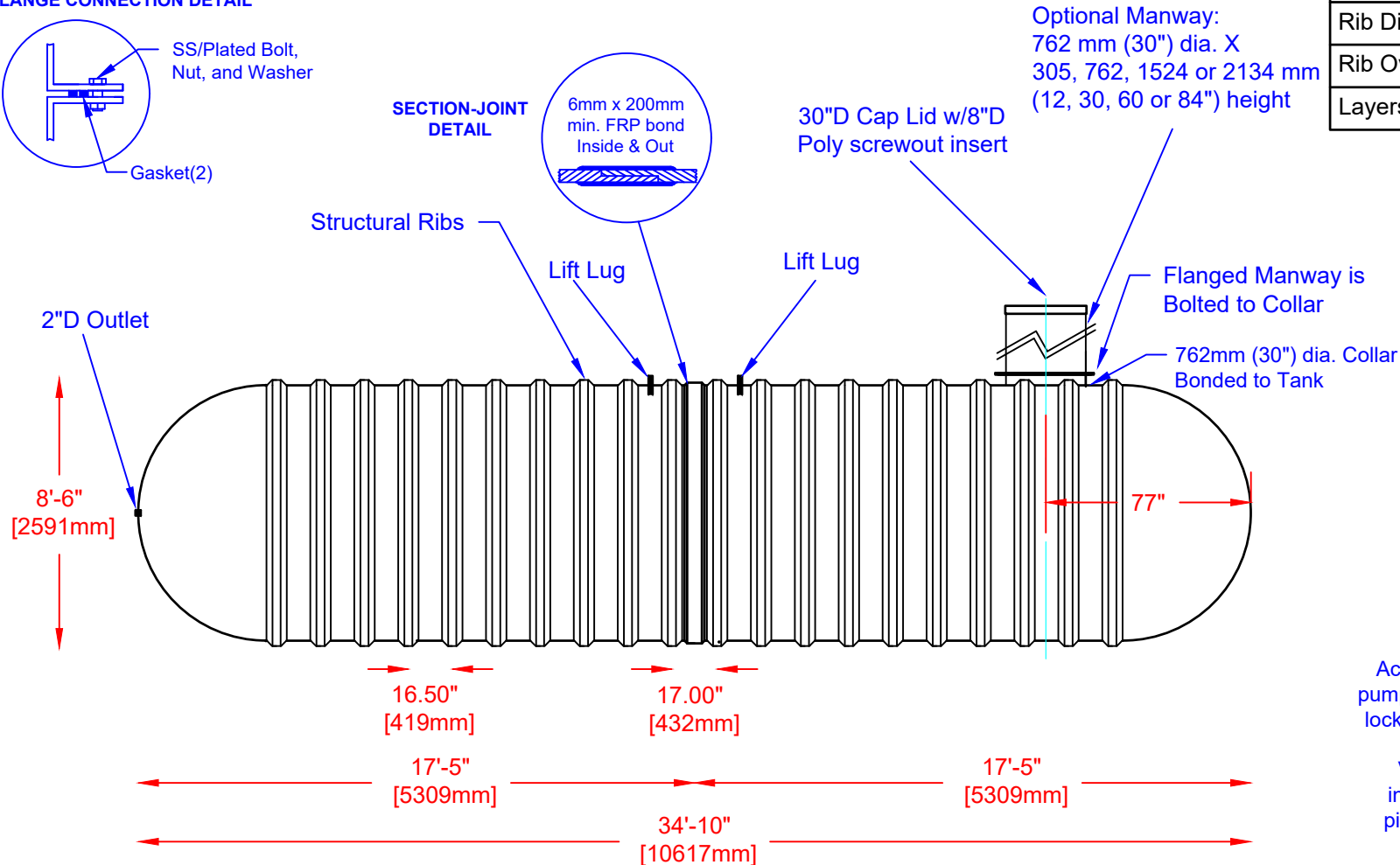


FLANGE CONNECTION DETAIL

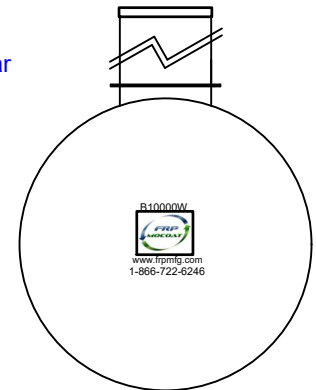


SECTION-JOINT DETAIL



Specifications

Total Cylinder Thickness	0.375"
Total End Cap Thickness	0.475"
Inlet Height (C.L.)	N/A
Outlet Height (C.L.)	48"
Inlet Diameter	N/A
Outlet Diameter	2"
Rib Dimension (C to C)	16.50"
Rib Overlay Thickness	0.250"
Layers of Woven (Rib)	1



Accessories available such as pump stand, 2nd manway, ladder, lock bar for lid, etc. at extra cost.

Various fittings available including bulkhead fittings, pipe, flanged fittings, vents, etc. at extra cost.

B10000W FIBREGLASS WATER CISTERN

Overall Length:	Approx. 10,617mm (34'10")	DATE: 07-07-2022	DWG SCALE:
Overall Weight:	Approx. 1,746 kg (3,850 lbs)	BY: MPS	REV: 4
Overall Capacity:	Approx. 45,770L (10,068 Imp Gal, 12,082 US Gal)	BURIAL DEPTH: UP TO 7'	
		APPROVAL:	



Website: www.frpmfg.com
Toll Free: 1-866-722-6246