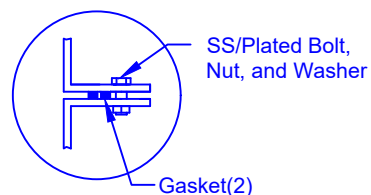


**SECTION-JOINT
DETAIL**

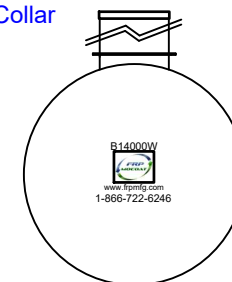
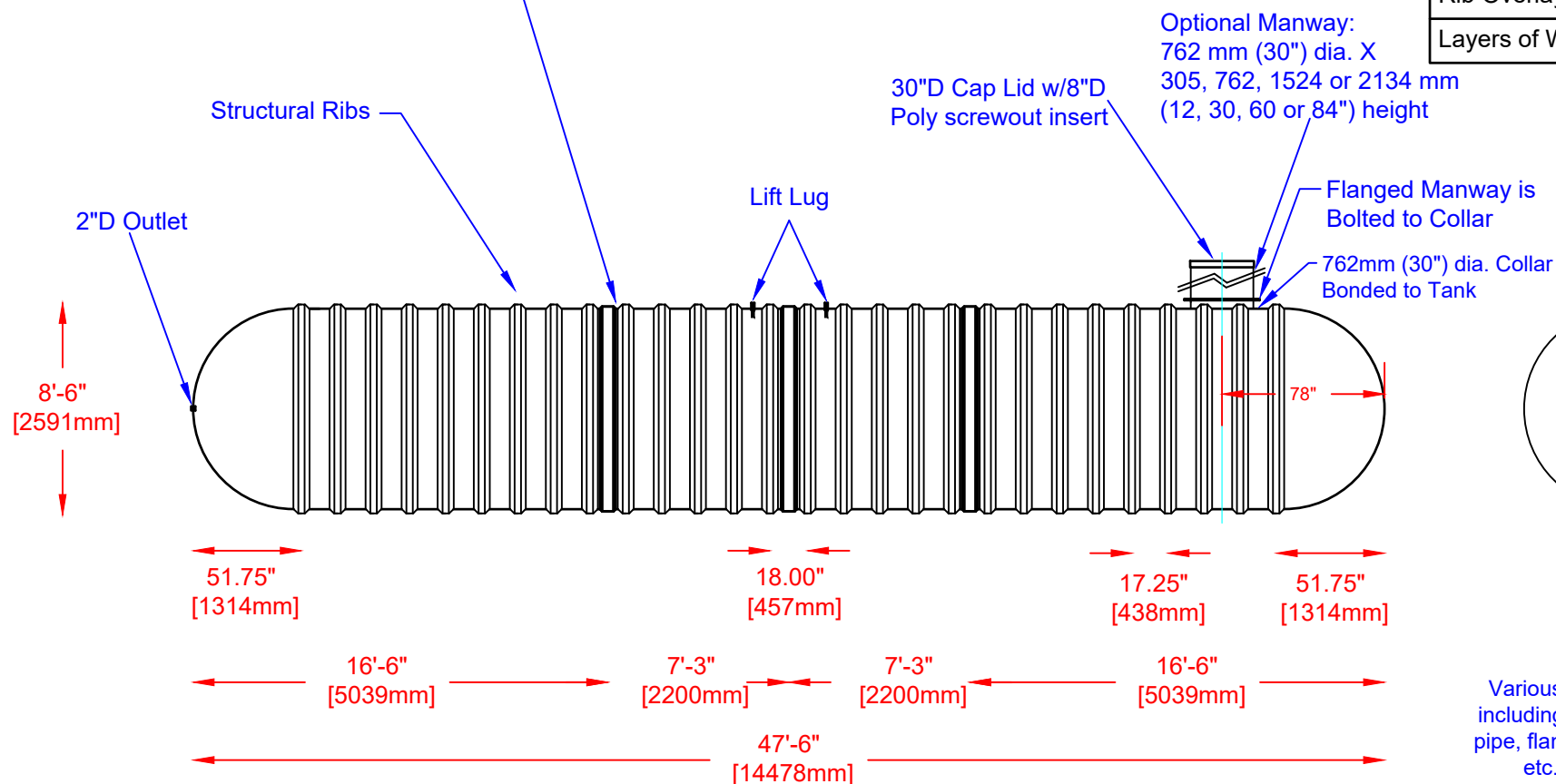


**FLANGE CONNECTION
DETAIL**



Specifications

Cylinder Thickness	0.500"
End Cap Thickness	0.645"
Inlet Height (C.L.)	N/A
Outlet Height (C.L.)	48"
Inlet Diameter	N/A
Outlet Diameter	2"
Rib Dimension (C to C)	17.25"
Rib Overlay Thickness	0.250"
Layers of Woven (Rib)	1



Various fittings available
including bulkhead fittings,
pipe, flanged fittings, vents,
etc. at extra cost.



Website: www.frpmfg.com
Toll Free: 1-866-722-6246

B14000W FIBERGLASS WATER CISTERN

Overall Length:	Approx. 14,478mm (47'6")	DATE: 07-07-2022	REV: 4
Overall Weight:	Approx. 3,198 kg (7,050 lbs)	BY: MPS	
Overall Capacity:	Approx. 63,794 (14,033 Imp Gal, 16,840 US Gal)	BURIAL DEPTH: UP TO 7'	
		APPROVAL:	



Drinking Water
NSF/ANSI 61