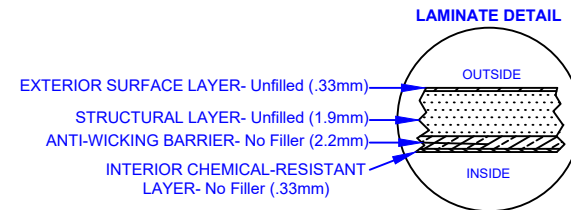
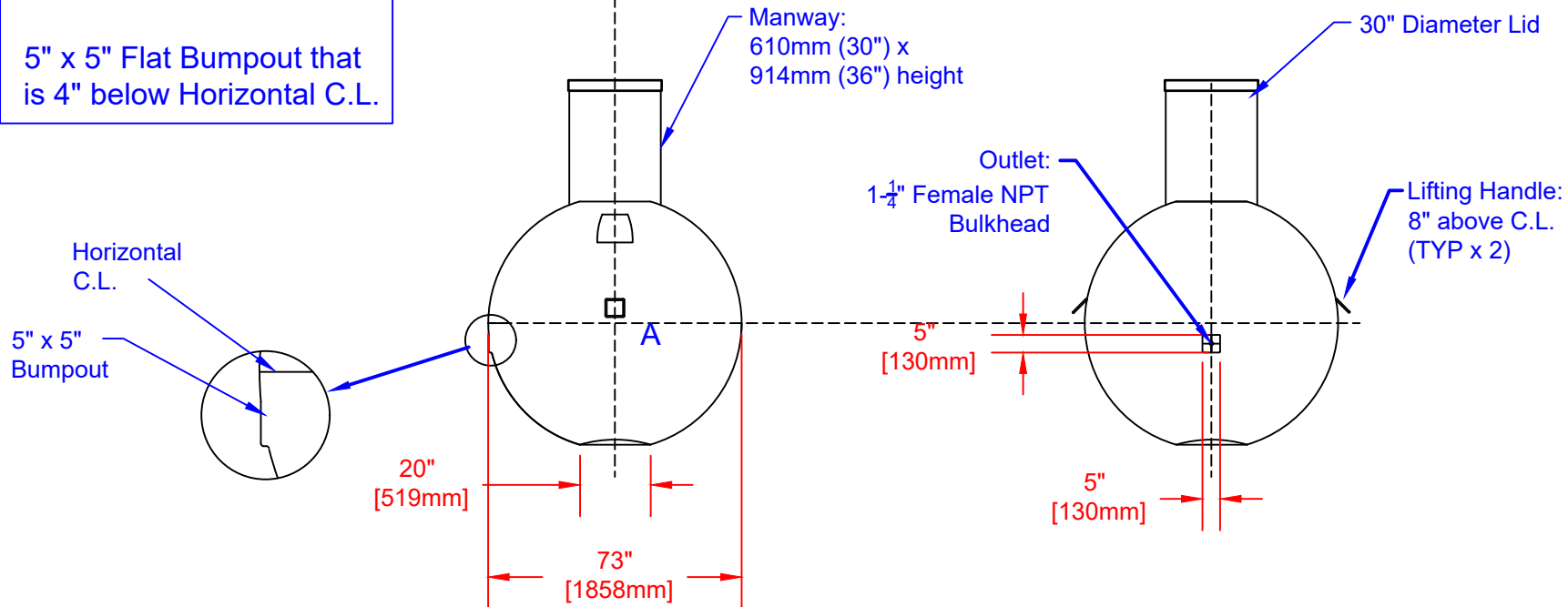


LABEL LOCATIONS					
ITEM	QTY	DESCRIPTION	ITEM	QTY	DESCRIPTION
A	1	NAME PLATE	B	1	INLET
C	1	OUTLET	D	1	DANGER GAS
E	2	LIFTING HANDLE			
* TANK COMES FULLY ASSEMBLED FROM FACTORY *					
* PVC FITTINGS ARE CSA CERTIFIED					



Note:  
5" x 5" Flat Bumpout that is 4" below Horizontal C.L.



Drinking Water  
NSF/ANSI 61



WB750 FIBREGLASS WATER  
CISTERN

DATE: 06-27-2022

DATE:

DWG SCALE:

Overall Diameter: 1,854mm (73")

BY: MPS

APPROVAL:

REV: A

Approx. Weight: 136kg (300lbs)

Holding Capacity: 3,337L (734 Imp Gal, 881 US Gal)