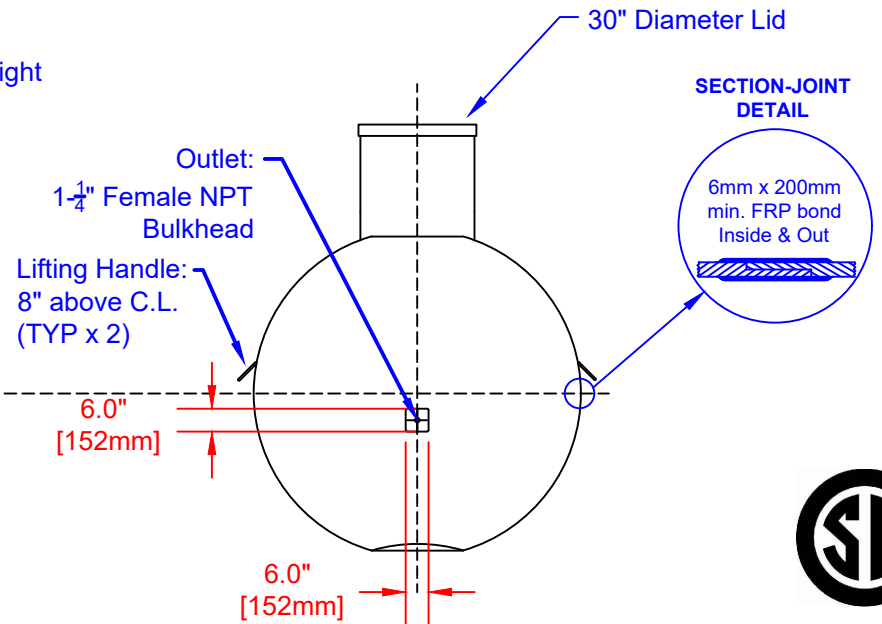
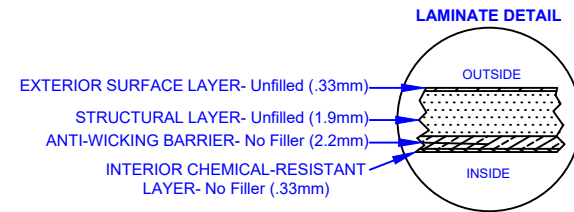
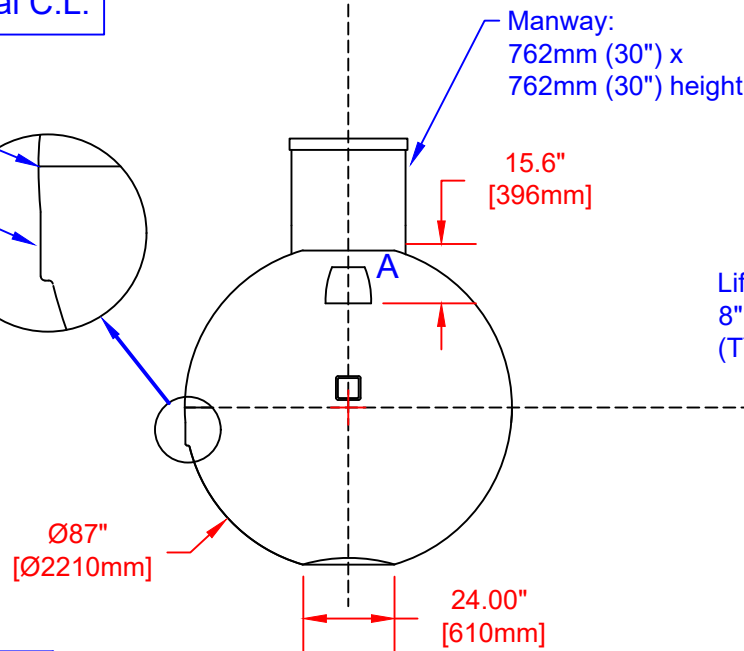
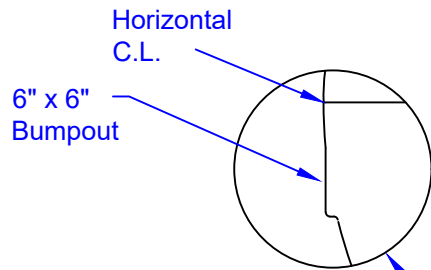


LABEL LOCATIONS					
ITEM	QTY	DESCRIPTION	ITEM	QTY	DESCRIPTION
A	1	NAME PLATE	B	1	INLET
C	1	OUTLET	D	1	DANGER
E	2	LIFTING HANDLE			
* TANK COMES FULLY ASSEMBLED FROM FACTORY *					
* PVC FITTINGS ARE CSA CERTIFIED					

Note:  
6" x 6" Flat Bumpout that is 4" below Horizontal C.L.



Drinking Water  
NSF/ANSI 61

 <b>WB1200 FIBREGLASS WATER CISTERN</b>	DATE: 06-27-2022	DATE:	DWG SCALE:	Overall Diameter: 2,210mm (87")
	BY: MPS	APPROVAL:	REV: A	Approx. Weight: 182kg (400lbs)
				Holding Capacity: 5,655L (1,244 Imp Gal, 1,493 US Gal)