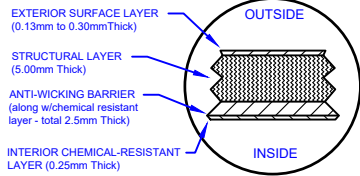
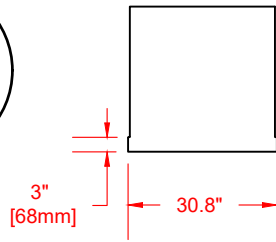


LAMINATE DETAIL



BELL RISER (30" ht. shown)



SECTION-JOINT DETAIL

Specifications

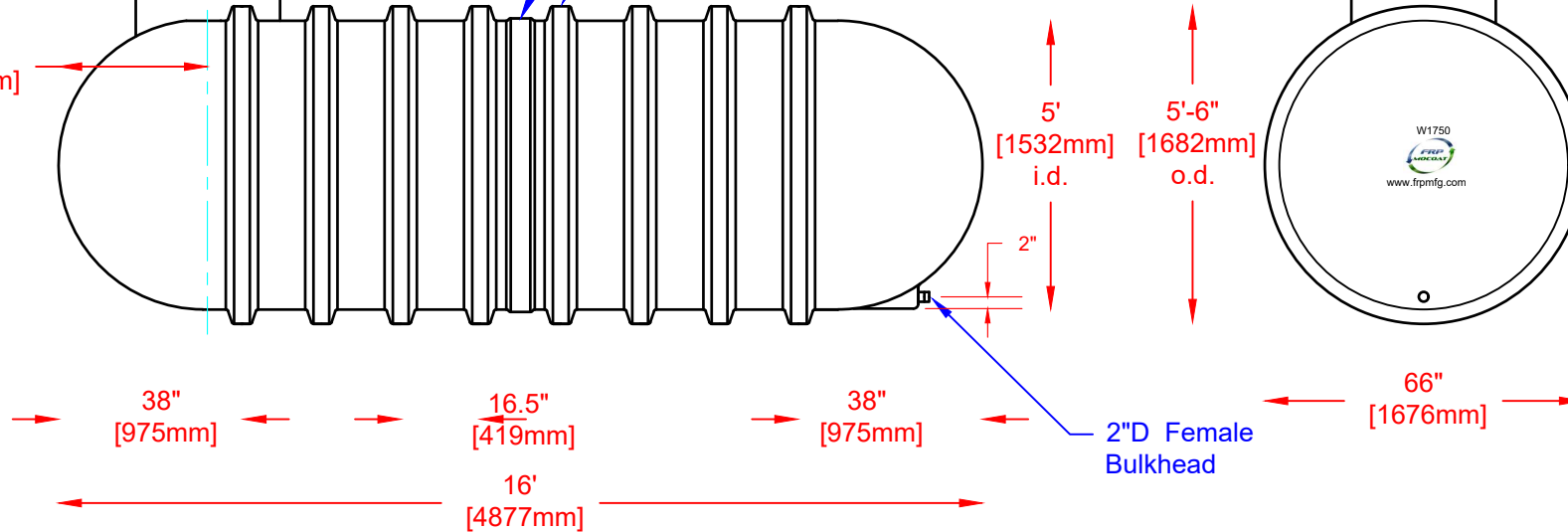
Cylinder Thickness	0.300"	Septic Chamber Depth	N/A
End Cap Thickness	0.300"	Septic Chamber Depth	N/A
Inlet Height (C.L.)	N/A	Effluent Chamber Depth	N/A
Outlet Height (C.L.)	2"	Chamber Wall dimensions	
Inlet Diameter	N/A	Height:	N/A
Outlet Diameter	2"	Thickness:	N/A
Rib Dimension (C to C)	16.5"	Opening Diameter:	N/A

30"D Lid w/8"D
poly vented
screw out insert.

30"D x 30"H
manway bonded
directly to tank

Structural Rib

31"
[785mm]



2"D Female
Bulkhead



Website: www.frpmfg.com
Toll Free: 1-866-722-6246

W1750-BONDED FIBREGLASS WATER CISTERN

Overall Length:	Approx. 4,877mm (16')
Overall Weight:	Approx. 397 kg (875 lbs)
Overall Capacity:	Approx. 7,955L (1,750 Imp Gal, 2,100 US Gal)

DATE: 06-27-2022 REV: 3

BY: MPS

BURIAL DEPTH: 7 Ft

DATE:

APPROVAL:



Drinking Water
NSF/ANSI 61