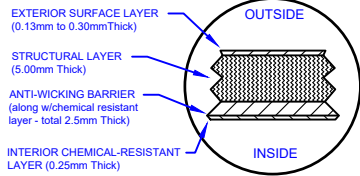
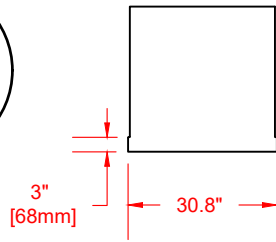


# LAMINATE DETAIL



# BELL RISER (30" ht. shown)



# SECTION-JOINT DETAIL

# Specifications

Cylinder Thickness	0.300"	Septic Chamber Depth	N/A
End Cap Thickness	0.300"	Septic Chamber Depth	N/A
Inlet Height (C.L.)	N/A	Effluent Chamber Depth	N/A
Outlet Height (C.L.)	2"	Chamber Wall dimensions	
Inlet Diameter	N/A	Height:	N/A
Outlet Diameter	2"	Thickness:	N/A
Rib Dimension (C to C)	16.5"	Opening Diameter:	N/A

30"D Lid w/8"D  
poly vented  
screw out insert.

30"D x 30"H  
manway bonded  
directly to tank

Structural Rib

31"  
[781mm]

2"

[62mm]

38"  
[974mm]

68"  
[1719mm]

38"  
[974mm]

2"D Female  
Bulkhead

12'  
[3656mm]

5'  
[1532mm]  
i.d.

5'-6"  
[1682mm]  
o.d.



66"  
[1676mm]



Website: [www.frpmfg.com](http://www.frpmfg.com)  
Toll Free: 1-866-722-6246

# W1250-BONDED FIBREGLASS WATER CISTERN

DATE: 27-06-2022 REV: 3

BY: MPS

Overall Length: Approx. 3,658mm (12' )

Overall Weight: Approx. 249 kg (550 lbs)

Overall Capacity: Approx. 5,682L (1,250 Imp Gal, 1,500 US Gal)

BURIAL DEPTH: 7 Ft

DATE:

APPROVAL:



Drinking Water  
NSF/ANSI 61