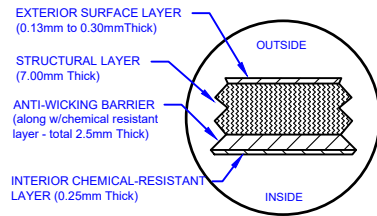


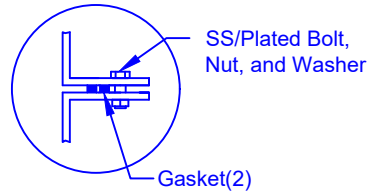
LAMINATE DETAIL



SECTION-JOINT DETAIL

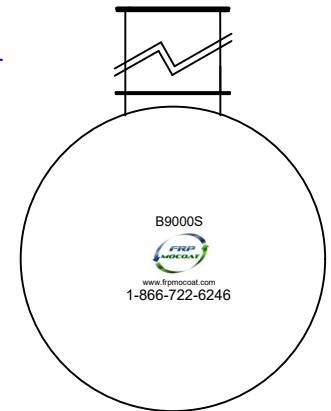
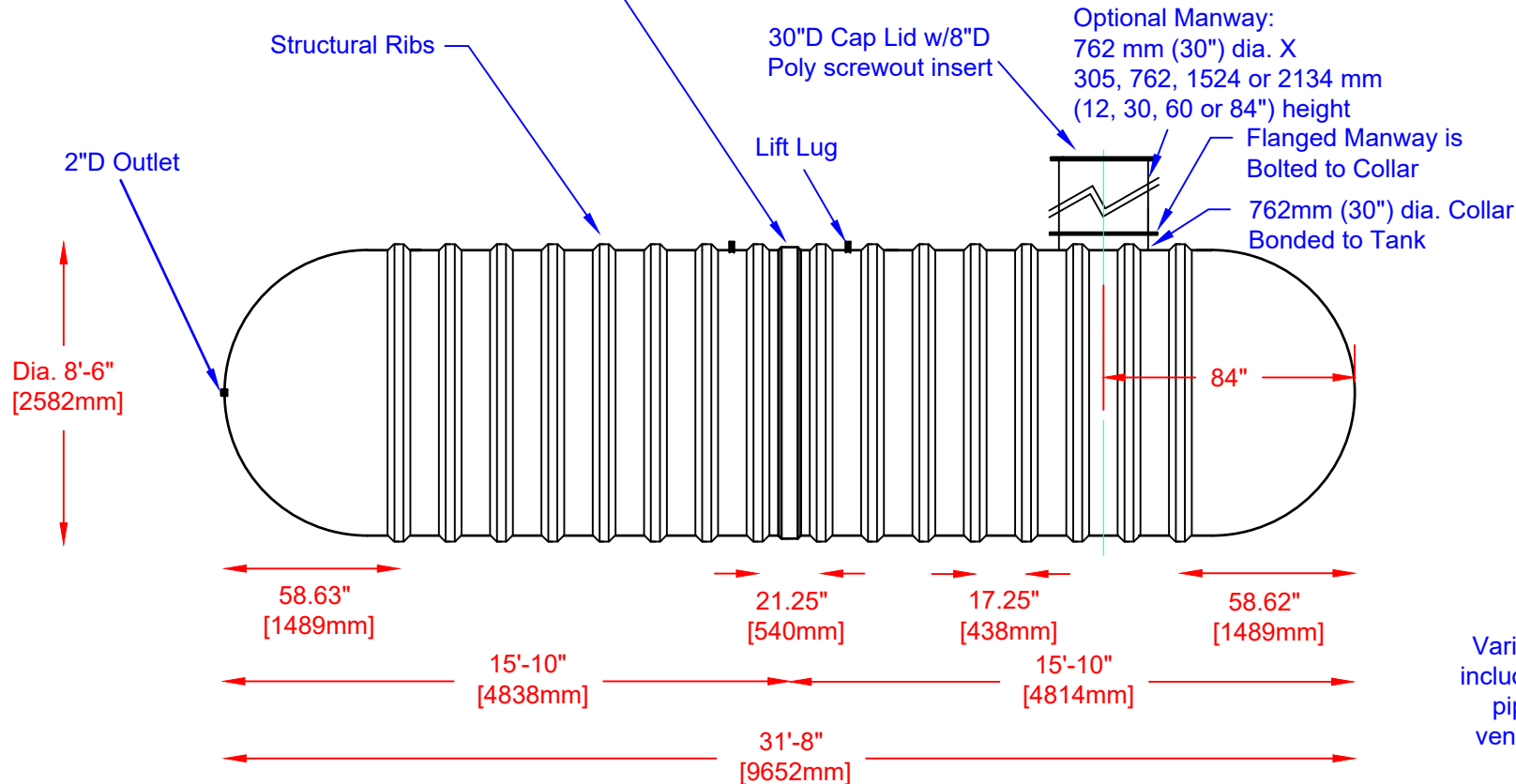


FLANGE CONNECTION DETAIL



Specifications

| | | | |
|------------------------|--------|-----------------------------|-----|
| Cylinder Thickness | 0.375" | Liquid Depth (holding tank) | 88" |
| End Cap Thickness | 0.475" | Septic Chamber Depth | N/A |
| Inlet Height (C.L.) | 90" | Effluent Chamber Depth | N/A |
| Outlet Height (C.L.) | N/A | Chamber Wall dimensions | |
| Inlet Diameter | 4" | Height: | N/A |
| Outlet Diameter | N/A | Thickness: | N/A |
| Rib Dimension (C to C) | 17.25" | Opening Diameter: | N/A |
| Rib Overlay Thickness | 0.250" | Layers of Woven (Rib) | 1 |



Various fittings available including bulkhead fittings, pipe, flanged fittings, vents, etc. at extra cost.



Website: www.frpmocoat.com
Toll Free: 1-866-722-6246

| B9000S FIBREGLASS SEWAGE HOLDING TANK | | DATE: 04-22-2022 | REV: 4 |
|---------------------------------------|--|------------------------|--------|
| Overall Length: | Approx. 9,652mm (31'8") | BY: MPS | |
| Overall Weight: | Approx. 1,568 kg (3,450 lbs) | BURIAL DEPTH: UP TO 7' | |
| Working Capacity: | Approx. 39,780L (8,750 Imp Gal, 10,500 US Gal) | DATE: | |
| Overall Capacity: | Approx. 41,264L (9,076 Imp Gal, 10,891 US Gal) | APPROVAL: | |

