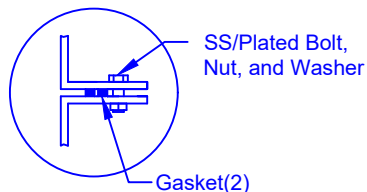


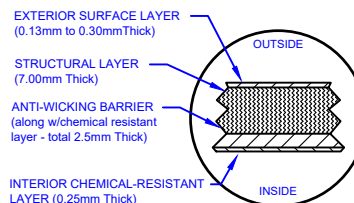
# FLANGE CONNECTION DETAIL



# SECTION-JOINT DETAIL

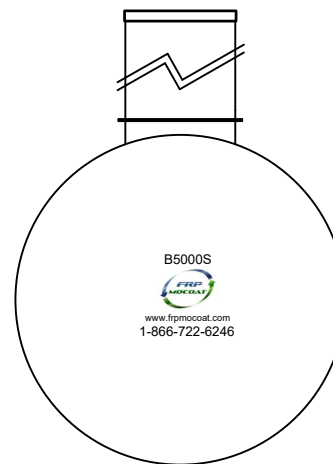
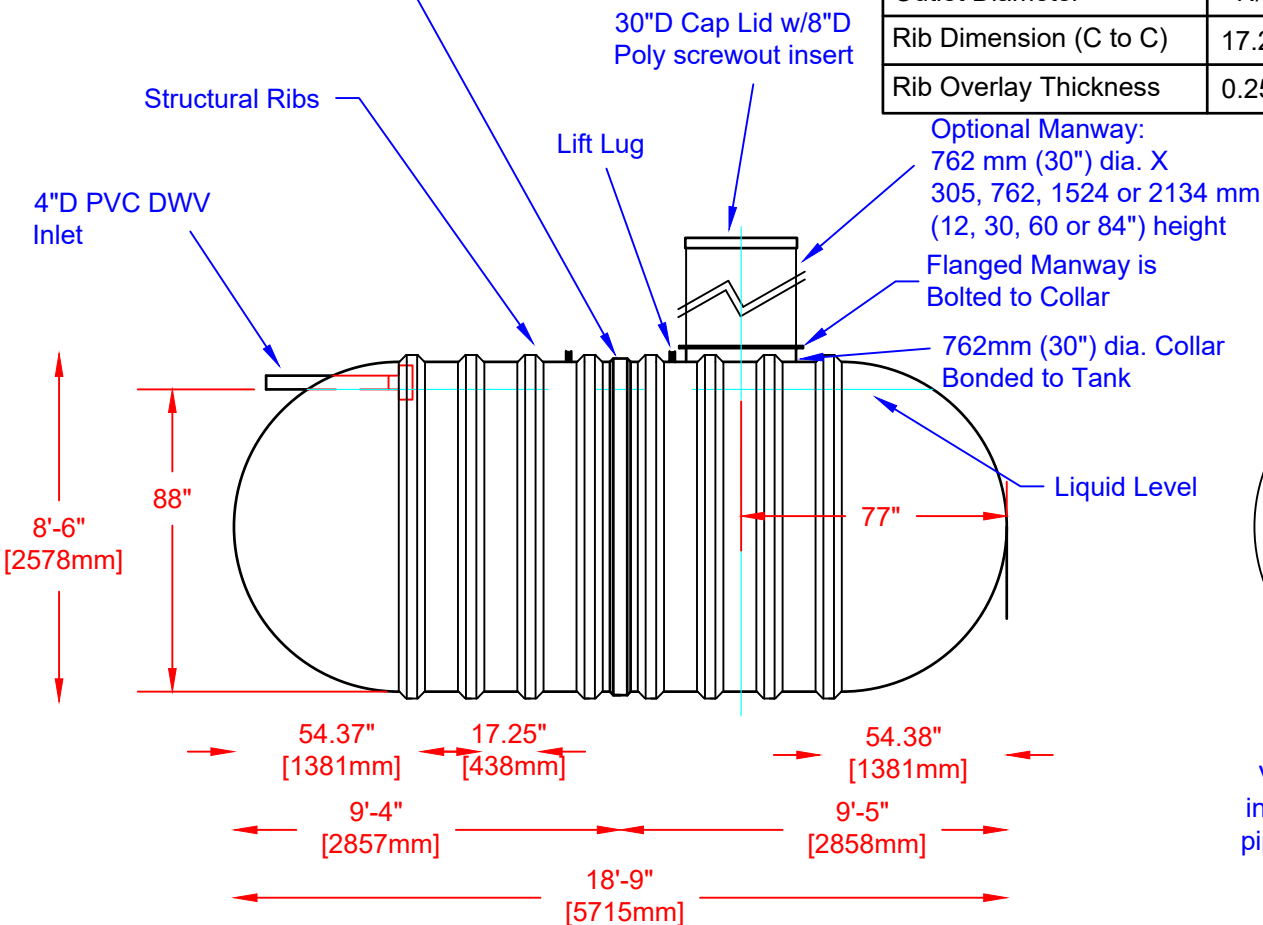


# LAMINATE DETAIL



# Specifications

Cylinder Thickness	0.375"	Liquid Depth (holding tank)	88"
End Cap Thickness	0.475"	Septic Chamber Depth	N/A
Inlet Height (C.L.)	90"	Effluent Chamber Depth	N/A
Outlet Height (C.L.)	N/A	Chamber Wall dimensions	
Inlet Diameter	4"	Height:	N/A
Outlet Diameter	N/A	Thickness:	N/A
Rib Dimension (C to C)	17.25"	Opening Diameter:	N/A
Rib Overlay Thickness	0.250"	Layers of Woven (Rib)	1



Various fittings available including bulkhead fittings, pipe, flanged fittings, vents, etc. at extra cost.



Website: [www.frpmfg.com](http://www.frpmfg.com)  
Toll Free: 1-866-722-6246

B5000S FIBREGLASS SEWAGE HOLDING TANK		DATE: 04-22-2022	REV: 4
Overall Length:	Approx. 5,715mm (18'9" )	BY: MPS	
Overall Weight:	Approx. 975 kg (2,150 lbs)	BURIAL DEPTH: 7 Ft	
Working Capacity:	Approx. 22,120L (4,866 Imp Gal, 5,839 US Gal)	DATE:	
Overall Capacity:	Approx. 22,886L (5,034 Imp Gal, 6,040 US Gal)	APPROVAL:	

