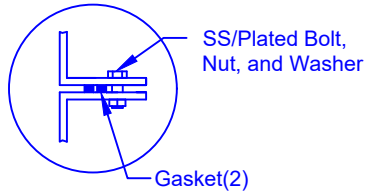


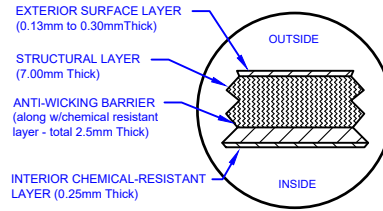
FLANGE CONNECTION DETAIL



SECTION-JOINT DETAIL

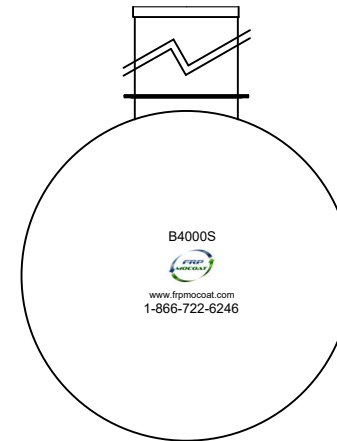
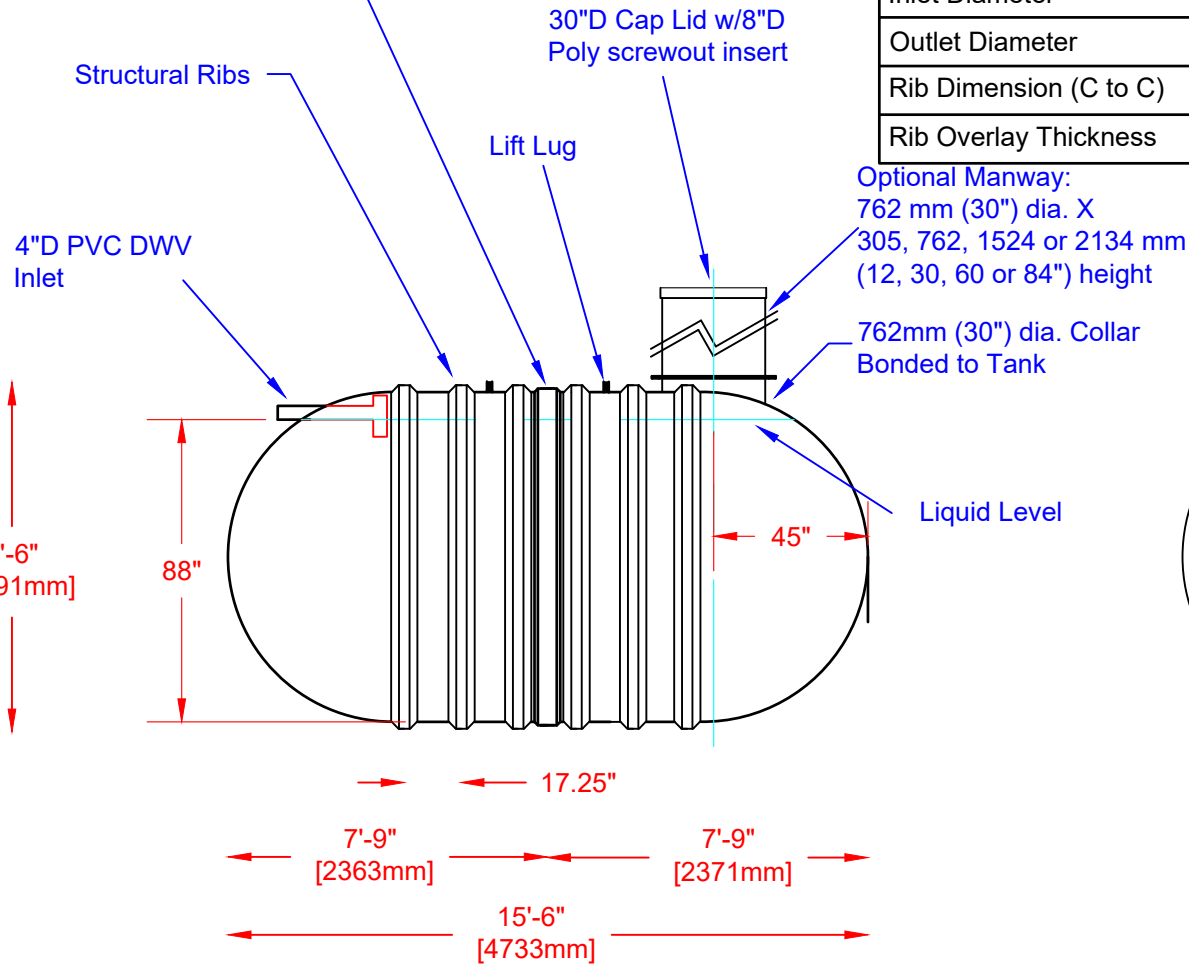


LAMINATE DETAIL



Specifications

Total Cylinder Thickness	0.375"	Liquid Depth (holding tank)	88"
Total End Cap Thickness	0.475"	Septic Chamber Depth	N/A
Inlet Height (C.L.)	90"	Effluent Chamber Depth	N/A
Outlet Height (C.L.)	N/A	Chamber Wall dimensions	
Inlet Diameter	4"	Height:	N/A
Outlet Diameter	N/A	Thickness:	N/A
Rib Dimension (C to C)	17.25"	Opening Diameter:	N/A
Rib Overlay Thickness	0.250"	Layers of Woven (Rib)	1



Website: www.frpmocoat.com
Toll Free: 1-866-722-6246

B4000S FIBREGLASS SEWAGE HOLDING TANK

Overall Length:	Approx. 4,724mm (15'6")	DATE: 04-22-2022	REV: 4
Overall Weight:	Approx. 771 kg (1,700 lbs)	BY: MPS	
Working Capacity:	Approx. 17,680L (3,889 Imp Gal, 4,667 US Gal)	BURIAL DEPTH: 7 Ft	
Overall Capacity:	Approx. 18,262L (4,016 Imp Gal, 4,819 US Gal)	DATE:	
		APPROVAL:	

