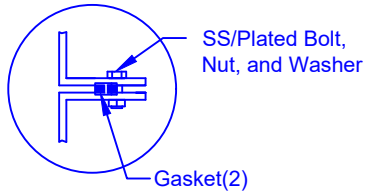


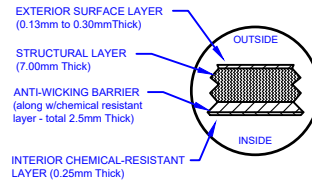
### FLANGE CONNECTION DETAIL



### SECTION-JOINT DETAIL

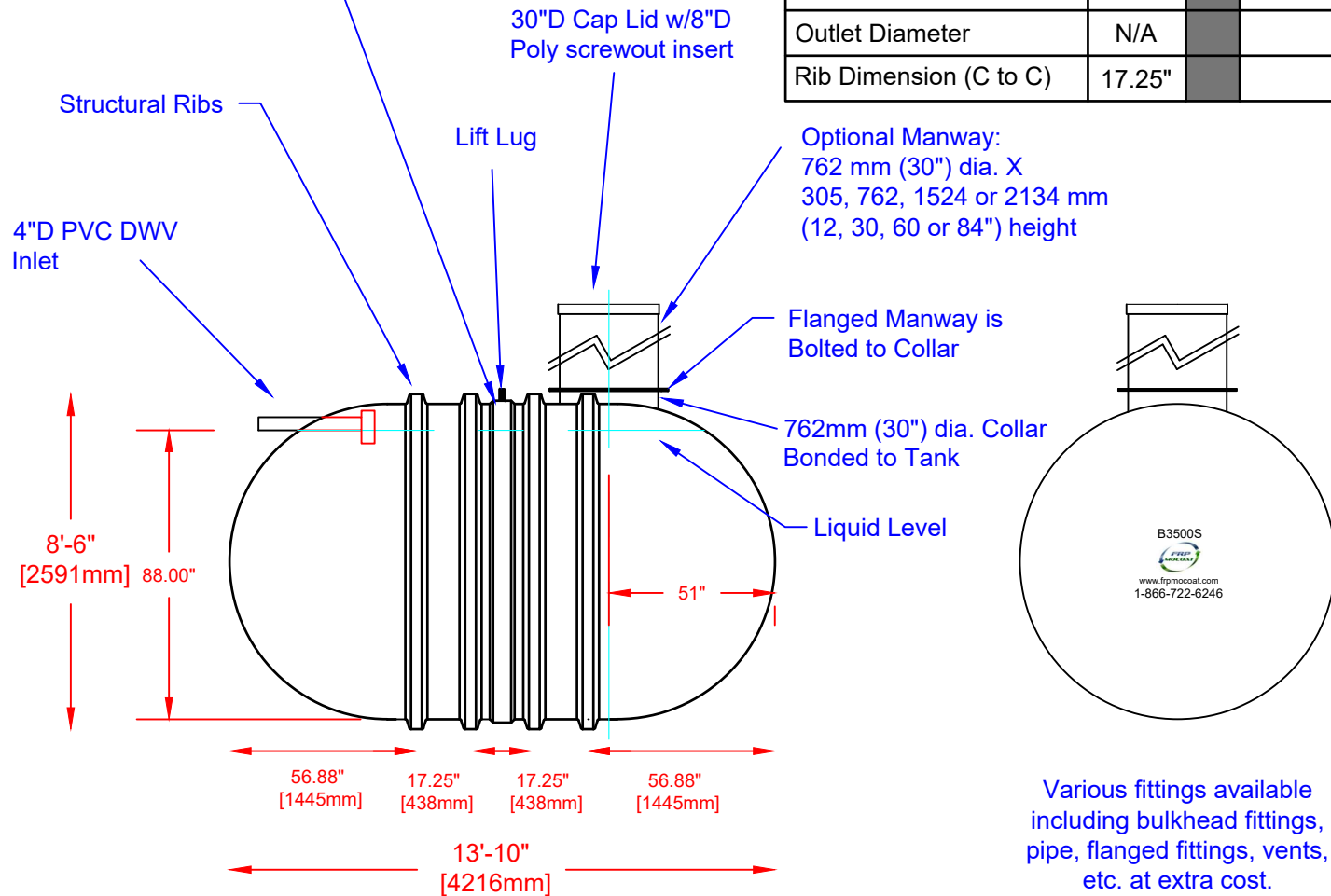


### LAMINATE DETAIL




## Specifications

Cylinder Thickness	0.375"	Liquid Depth (holding tank)	88"
End Cap Thickness	0.475"	Septic Chamber Depth	N/A
Inlet Height (C.L.)	90"	Effluent Chamber Depth	N/A
Outlet Height (C.L.)	N/A	Chamber Wall dimensions	
Inlet Diameter	4"	Height:	N/A
Outlet Diameter	N/A	Thickness:	N/A
Rib Dimension (C to C)	17.25"	Opening Diameter:	N/A



Various fittings available including bulkhead fittings, pipe, flanged fittings, vents, etc. at extra cost.

 <p>Website: <a href="http://www.frpmocoat.com">www.frpmocoat.com</a> Toll Free: 1-866-722-6246</p>	<b>B3500S FIBREGLASS SEWAGE HOLDING TANK</b>		DATE: 04-22-2022	REV: 4
	Overall Length:	Approx. 4,216mm (13'10" )	BY: MPS	
	Overall Weight:	Approx. 703 kg (1,550 lbs)	BURIAL DEPTH: 7 Ft	
	Working Capacity:	Approx. 15,410L (3,390 Imp Gal, 4,068 US Gal)	DATE:	
	Overall Capacity:	Approx. 15,911L (3,500 Imp Gal, 4,200 US Gal)	APPROVAL:	

