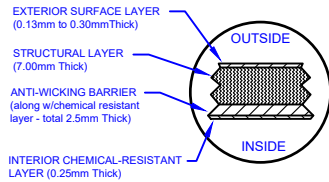
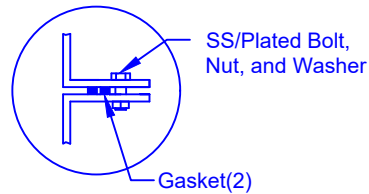


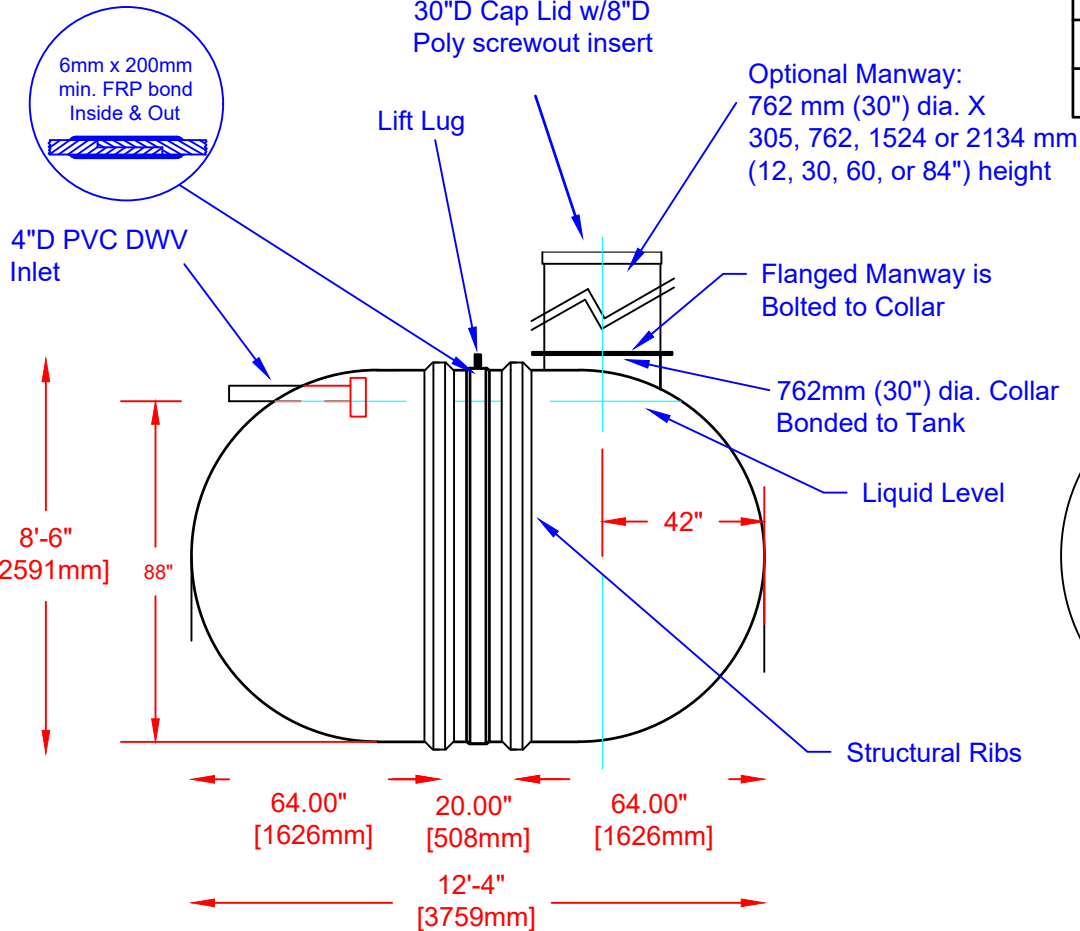
LAMINATE DETAIL



FLANGE CONNECTION DETAIL

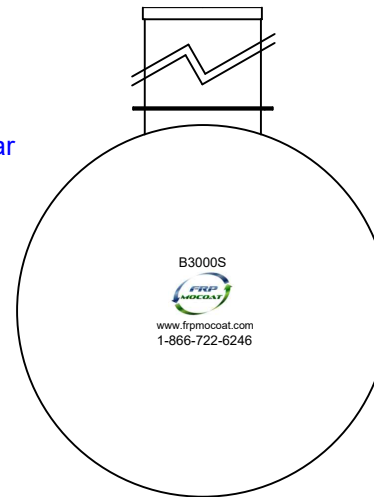


SECTION-JOINT DETAIL



Specifications

Total Cylinder Thickness	0.375"	Liquid Depth (holding tank)	88"
Total End Cap Thickness	0.475"	Septic Chamber Depth	N/A
Inlet Height (C.L.)	90"	Effluent Chamber Depth	N/A
Outlet Height (C.L.)	N/A	Chamber Wall dimensions	
Inlet Diameter	4"	Height:	N/A
Outlet Diameter	N/A	Thickness:	N/A
Rib Dimension (C to C)	17.25"	Opening Diameter:	N/A
Rib Overlay Thickness	0.250"	Layers of Woven (Rib)	1



Various fittings available including bulkhead fittings, pipe, flanged fittings, vents, etc. at extra cost.

Accessories available such as pump stand, divider wall(s), 2nd manway, lock bar for lid, etc. at extra cost.



Website: www.frpmocoat.com
Toll Free: 1-866-722-6246

B3000S FIBREGLASS SEWAGE HOLDING TANK

Overall Length:	Approx. 3,759mm (12'4")
Overall Weight:	Approx. 612 kg (1,350 lbs)
Working Capacity:	Approx. 13,350L (2,936 Imp Gal, 3,523 US Gal)
Overall Capacity:	Approx. 13,638L (3,000 Imp Gal, 3,600 US Gal)

DATE: 04-22-2022 REV: 4

BY: MPS

BURIAL DEPTH: 7 Ft

DATE:

APPROVAL:

