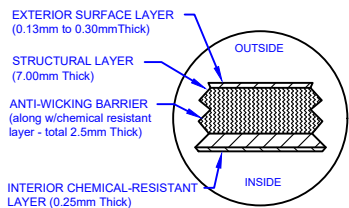
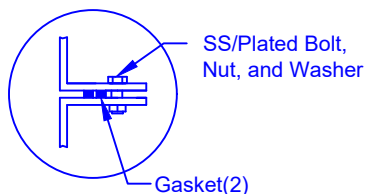


LAMINATE DETAIL



FLANGE CONNECTION DETAIL



SECTION-JOINT DETAIL



Specifications			
Total Cylinder Thickness	0.375"	Liquid Depth (holding tank)	88"
Total End Cap Thickness	0.475"	Septic Chamber Depth	N/A
Inlet Height (C.L.)	90"	Effluent Chamber Depth	N/A
Outlet Height (C.L.)	N/A	Chamber Wall dimensions	
Inlet Diameter	4"	Height:	N/A
Outlet Diameter	N/A	Thickness:	N/A
Rib Dimension (C to C)	17.25"	Opening Diameter:	N/A
Rib Overlay Thickness	0.250	Layers of Woven (Rib)	1

30"D Cap Lid w/8"D Poly screwout insert

Lift Lug

4"D PVC DWV Inlet

Optional Manway:
762 mm (30") dia. X
305, 762, 1524 or 2134 mm
(12, 30, 60 or 84") height

Flanged Manway is Bolted to Collar

762mm (30") dia. Collar Bonded to Tank

Liquid Level

Structural Ribs

8'-6"
[2589mm]

88"

34"

43.00"
[1092mm]

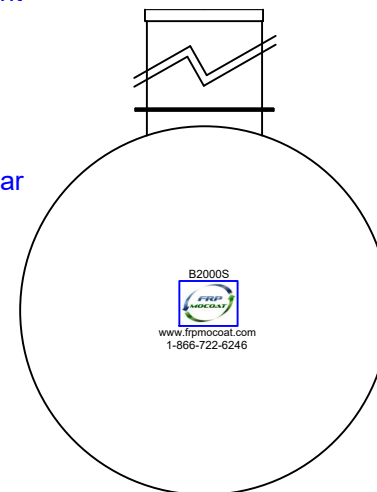
24.00"
[610mm]

43.00"
[1092mm]

9'-2"
[2794mm]

Various fittings available including bulkhead fittings, pipe, flanged fittings, vents, etc. at extra cost.

Accessories available such as pump stand, 2nd manway, ladder, lock bar for lid, etc. at extra cost.



Website: www.frpmocoat.com
Toll Free: 1-866-722-6246

B2000S FIBREGLASS SEWAGE HOLDING TANK

DATE: 04-22-2022 REV: 4

Overall Length:	Approx. 2,794mm (9'2")
Overall Weight:	Approx. 499 kg (1,100 lbs)
Working Capacity:	Approx. 9,030L (1,986 Imp Gal, 2,383 US Gal)
Overall Capacity:	Approx. 9,250L (2,035 Imp Gal, 2,442 US Gal)

BY: MPS
BURIAL DEPTH: 7 Ft
DATE:
APPROVAL:

