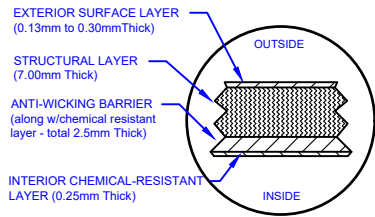


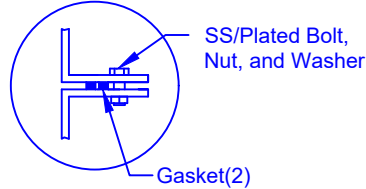
LAMINATE DETAIL



SECTION-JOINT DETAIL



FLANGE CONNECTION DETAIL



Specifications

Total Cylinder Thickness	0.500"	Liquid Depth (holding tank)	88"
Total End Cap Thickness	0.645"	Septic Chamber Depth	N/A
Inlet Height (C.L.)	90"	Effluent Chamber Depth	N/A
Outlet Height (C.L.)	N/A	Chamber Wall dimensions	
Inlet Diameter	4"	Height:	N/A
Outlet Diameter	N/A	Thickness:	N/A
Rib Dimension (C to C)	17.25"	Opening Diameter:	N/A
Rib Overlay Thickness	0.250"	Layers of Woven (Rib)	1

Structural Ribs

Lift Lug

30"D Cap Lid w/8"D Poly screwout insert

Optional Manway:
762 mm (30") dia. X
305, 762, 1524 or 2134 mm
(12, 30, 60 or 84") height

Flanged Manway
Bolted to Collar

Collar (762 mm
(30") dia.)
Bonded to Tank

2"D Outlet

8'-6"
[2582mm]

51.50"
[1308mm]

198.22"
[5035mm]

137.60"
[3495mm]

198.40"
[5039mm]

44'-7"
[13576mm]

17.67"
[449mm]

17.25"
[438mm]

51.50"
[1308mm]

Various fittings available
including bulkhead fittings,
pipe, flanged fittings, vents,
etc. at extra cost.



Website: www.frpmocoat.com
Toll Free: 1-866-722-6246

B13000S FIBREGLASS SEWAGE HOLDING TANK

Overall Length:	Approx. 13,576mm (44'7")	DATE: 04-22-2022	REV: 4
Overall Weight:	Approx. 2,880 kg (6,350 lbs)	BY: MPS	
Working Capacity:	Approx. 57,420L (12,630 Imp Gal, 15,156 US Gal)	BURIAL DEPTH: UP TO 7'	
Overall Capacity:	Approx. 59,644L (13,120 Imp Gal, 15,744 US Gal)	DATE:	
		APPROVAL:	

