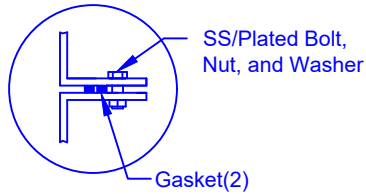
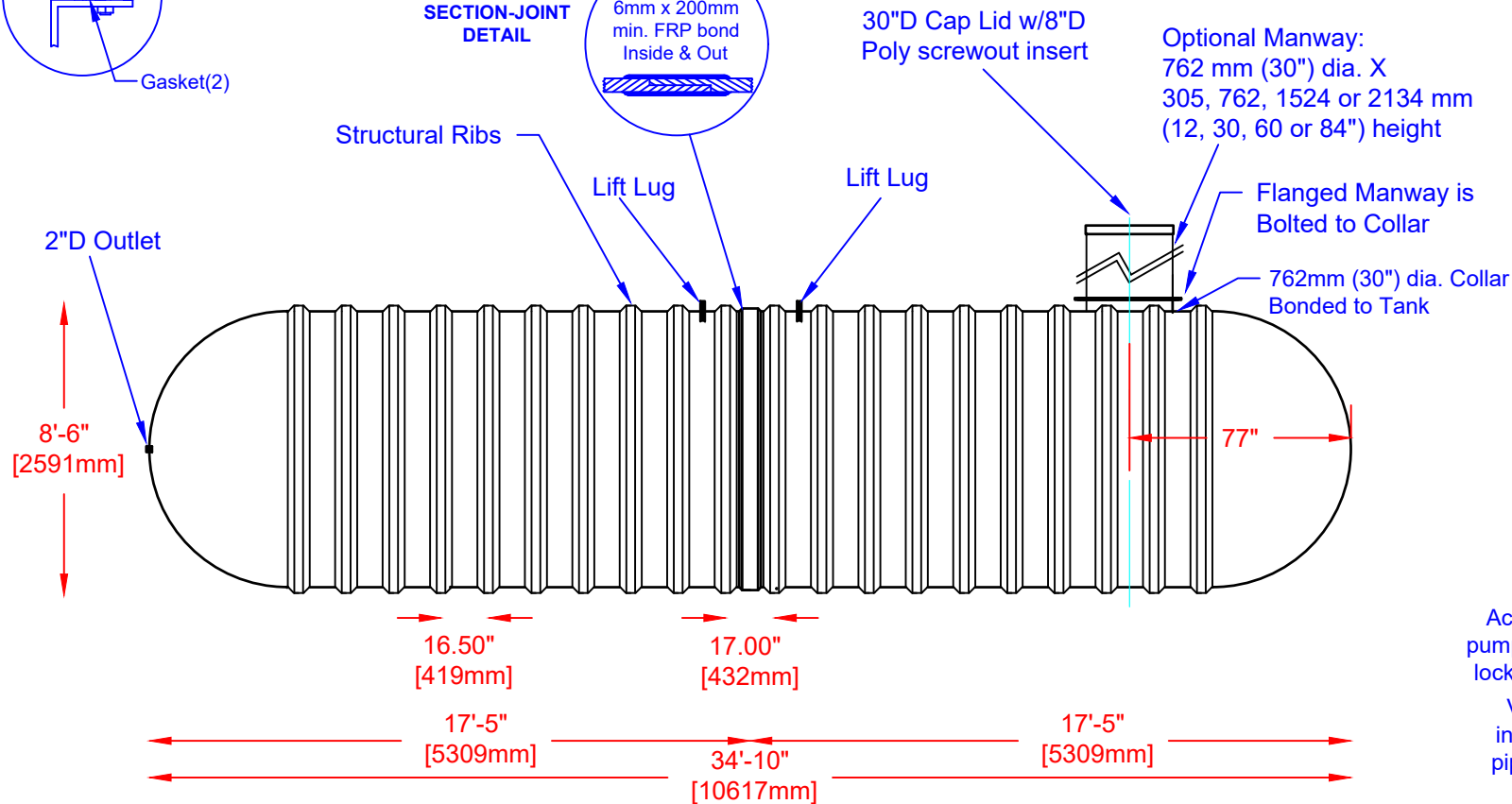


FLANGE CONNECTION DETAIL



SECTION-JOINT DETAIL



Accessories available such as pump stand, 2nd manway, ladder, lock bar for lid, etc. at extra cost.

Various fittings available including bulkhead fittings, pipe, flanged fittings, vents, etc. at extra cost.

Specifications

Cylinder Thickness	0.375"	Liquid Depth (holding tank)	88"
End Cap Thickness	0.475"	Septic Chamber Depth	N/A
Inlet Height (C.L.)	90"	Effluent Chamber Depth	N/A
Outlet Height (C.L.)	N/A	Chamber Wall dimensions	
Inlet Diameter	4"	Height:	N/A
Outlet Diameter	N/A	Thickness:	N/A
Rib Dimension (C to C)	17.25"	Opening Diameter:	N/A
Rib Overlay Thickness	0.250"	Layers of Woven (Rib)	1



Website: www.frpmocoat.com
Toll Free: 1-866-722-6246

B10000S FIBREGLASS SEWAGE HOLDING TANK

Overall Length:	Approx. 10,617mm (34'10")	DATE: 04-22-2022	REV: 4
Overall Weight:	Approx. 1,746 kg (3,850 lbs)	BY: MPS	
Working Capacity:	Approx. 44,100L (9,700 Imp Gal, 11,640 US Gal)	BURIAL DEPTH: UP TO 7'	
Overall Capacity:	Approx. 45,770L (10,068 Imp Gal, 12,082 US Gal)	DATE:	
		APPROVAL:	

