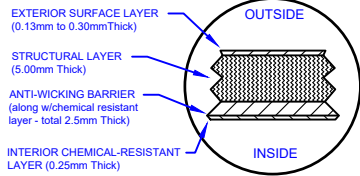
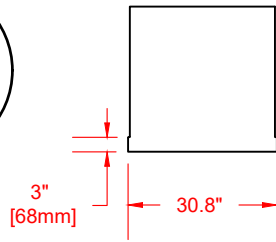


# LAMINATE DETAIL



# BELL RISER (30" ht. shown)



# SECTION-JOINT DETAIL

# Specifications

|                        |        |                         |     |
|------------------------|--------|-------------------------|-----|
| Cylinder Thickness     | 0.300" | Septic Chamber Depth    | 54" |
| End Cap Thickness      | 0.300" | Septic Chamber Depth    | N/A |
| Inlet Height (C.L.)    | 56"    | Effluent Chamber Depth  | N/A |
| Outlet Height (C.L.)   | N/A    | Chamber Wall dimensions |     |
| Inlet Diameter         | 4"     | Height:                 | N/A |
| Outlet Diameter        | N/A    | Thickness:              | N/A |
| Rib Dimension (C to C) | 16.5"  | Opening Diameter:       | N/A |

30"D Lid w/8"D  
poly nonvented  
screw out insert.

30"D x 30"H  
manway bonded  
directly to tank

31"  
[785mm]

Structural Rib

Liquid Level

4" PVC-DWV  
Inlet

4"  
[103mm]

5'  
[1532mm]  
i.d.

5'-6"  
[1682mm]  
o.d.

54"

38"  
[975mm]

16.5"  
[419mm]

38"  
[975mm]

16'  
[4877mm]

66"  
[1676mm]



Website: [www.frpmocoat.com](http://www.frpmocoat.com)  
Toll Free: 1-866-722-6246

# H1750-BONDED FIBREGLASS SEWAGE HOLDING TANK

DATE: 02-14-2022 REV: 1

|                   |  |
|-------------------|--|
| Overall Length:   | Approx. 4,877mm (16')                        |
| Overall Weight:   | Approx. 397 kg (875 lbs)                     |
| Working Capacity: | Approx. 7,594L (1,670 Imp Gal, 2,004 US Gal) |
| Overall Capacity: | Approx. 7,955L (1,750 Imp Gal, 2,100 US Gal) |

BY: MPS  
BURIAL DEPTH: 7 Ft  
DATE:  
APPROVAL:

