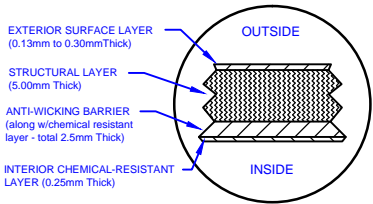
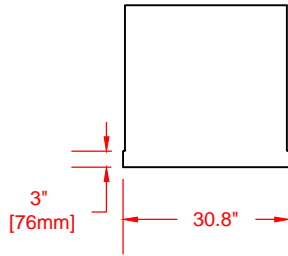


LAMINATE DETAIL



BELL RISER (30" ht. shown)



6mm x 200mm
min. FRP bond
Inside & Out

SECTION-JOINT DETAIL



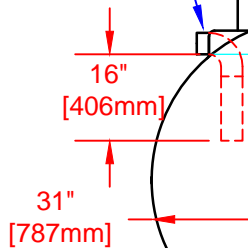
Specifications

Cylinder Thickness	0.300"	Liquid Depth (holding tank)	52"
End Cap Thickness	0.300"	Septic Chamber Depth	N/A
Inlet Height (C.L.)	56"	Effluent Chamber Depth	N/A
Outlet Height (C.L.)	54"	Chamber Wall dimensions	
Inlet Diameter	4"	Height:	N/A
Outlet Diameter	4"	Thickness:	N/A
Rib Dimension (C to C)	16.5"	Opening Diameter:	N/A

30"D Cap Lid w/8"D
Poly non-vented
screw out Lid

30"D x 36"H
manway bonded
directly to tank

4" PVC DWV
Outlet



Structural Rib

Liquid Level

4" PVC-DWV
Inlet

4"
[102mm]

5'
[1524mm]

i.d.

5'-6"
[1676mm]

o.d.



66"
[1676mm]

38"
[968mm]

16.5"
[419mm]

39"
[983mm]

14'
[4267mm]

FRP
MANUFACTURING (2010) INC.
Website: www.frpmfg.com
Toll Free: 1-866-722-6246

T1500-BONDED FIBREGLASS TRICKLE TANK

Overall Length:	Approx. 4,267mm (14')
Overall Weight:	Approx. 340 kg (750 lbs)
Working Capacity:	Approx. 6,366L (1,400 Imp Gal, 1,680 US Gal)
Overall Capacity:	Approx. 6,820L (1,500 Imp Gal, 1,800 US Gal)

DATE: 01-08-2014 REV: 1

BY: MPS

BURIAL DEPTH: 7 Ft

DATE:

APPROVAL:

