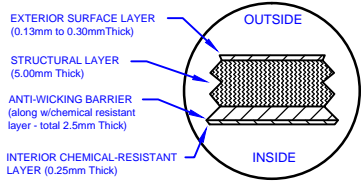
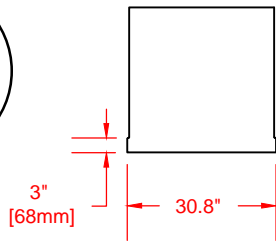


LAMINATE DETAIL



BELL RISER (30" ht. shown)



SECTION-JOINT DETAIL

Specifications

Cylinder Thickness	0.300"	Septic Chamber Depth	N/A
End Cap Thickness	0.300"	Septic Chamber Depth	N/A
Inlet Height (C.L.)	N/A	Effluent Chamber Depth	N/A
Outlet Height (C.L.)	2"	Chamber Wall dimensions	
Inlet Diameter	N/A	Height:	N/A
Outlet Diameter	2"	Thickness:	N/A
Rib Dimension (C to C)	16.5"	Opening Diameter:	N/A

30"D Lid w/8"D poly vented screw out insert.

30"D x 30"H manway bonded directly to tank

31" [785mm]

Structural Rib

5' [1532mm] i.d.
5'-6" [1682mm] o.d.



66" [1676mm]

2"D Female Bulkhead

42" [1064mm]

16.5" [419mm]

42" [1076mm]

18' [5486mm]



Website: www.frpmfg.com
Toll Free: 1-866-722-6246

W2000-BONDED FIBREGLASS WATER CISTERN

Overall Length:	Approx. 5,486mm (18')
Overall Weight:	Approx. 453 kg (1,000 lbs)
Overall Capacity:	Approx. 9,092L (2,000 Imp Gal, 2,400 US Gal)

DATE: 04-16-2015	REV: 1
BY: MPS	
BURIAL DEPTH: 7 Ft	
DATE:	
APPROVAL:	



Drinking Water NSF/ANSI 61