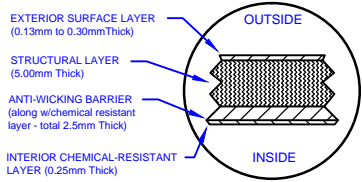
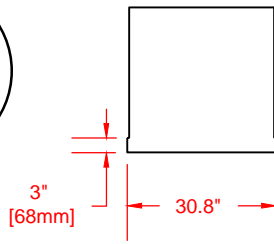


LAMINATE DETAIL



BELL RISER (30" ht. shown)



SECTION-JOINT DETAIL

Specifications

Cylinder Thickness	0.300"	Septic Chamber Depth	N/A
End Cap Thickness	0.300"	Septic Chamber Depth	N/A
Inlet Height (C.L.)	N/A	Effluent Chamber Depth	N/A
Outlet Height (C.L.)		Chamber Wall dimensions	
Inlet Diameter	N/A	Height:	N/A
Outlet Diameter	2"	Thickness:	N/A
Rib Dimension (C to C)	16.5"	Opening Diameter:	N/A

30"D Lid w/8"D poly vented screw out insert.

30"D x 36"H manway bonded directly to tank

Structural Rib

31" [785mm]

5' [1532mm] i.d.
5'-6" [1682mm] o.d.

38" [975mm] 16.5" [419mm] 39" [983mm]
14' [4268mm]

Outlet: 2"D Female NPT Bulkhead

W1500
FRP
MANUFACTURING (2010) INC.
www.frpmsg.com

66" [1676mm]



Website: www.frpmsg.com
Toll Free: 1-866-722-6246

W1500-BONDED FIBREGLASS WATER CISTERN

Overall Length:	Approx. 4,268mm (14')
Overall Weight:	Approx. 340 kg (750 lbs)
Overall Capacity:	Approx. 6,819L (1,500 Imp Gal, 1,800 US Gal)

DATE: 04-17-2014 REV: 2

BY: MPS

BURIAL DEPTH: 7 Ft

DATE:

APPROVAL:



Drinking Water
NSF/ANSI 61