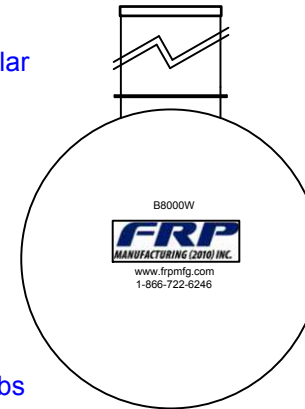
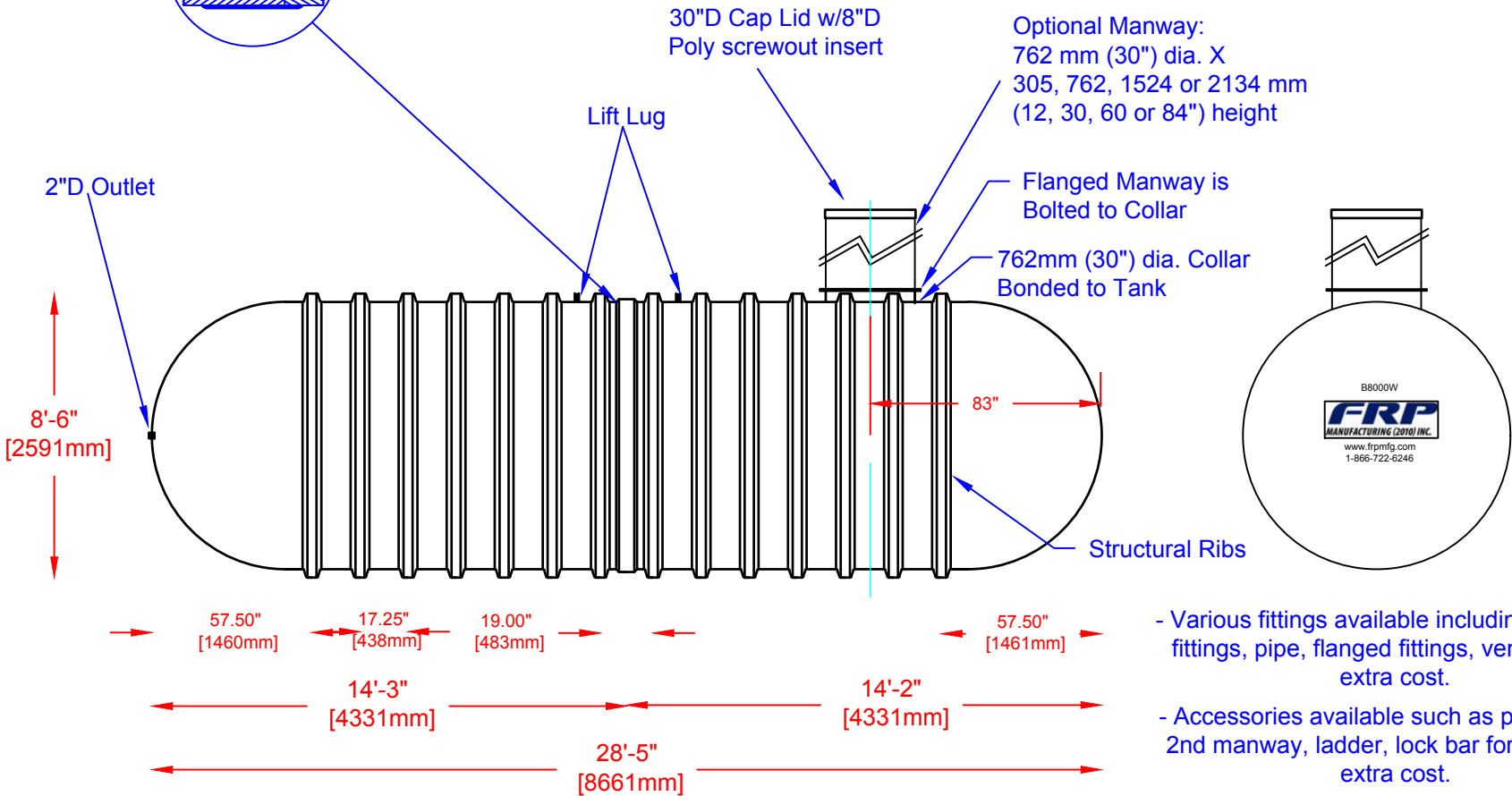
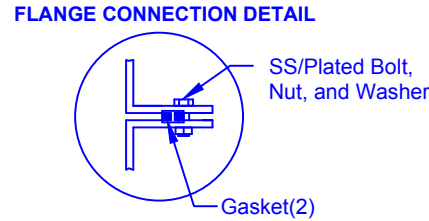
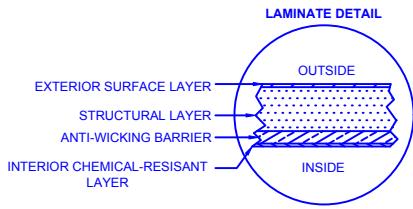


Specifications

| | |
|------------------------|--------|
| Cylinder Thickness | 0.375" |
| End Cap Thickness | 0.475" |
| Inlet Height (C.L.) | N/A |
| Outlet Height (C.L.) | 48" |
| Inlet Diameter | N/A |
| Outlet Diameter | 2" |
| Rib Dimension (C to C) | 17.25" |



- Various fittings available including bulkhead fittings, pipe, flanged fittings, vents, etc. at extra cost.

- Accessories available such as pump stand, 2nd manway, ladder, lock bar for lid, etc. at extra cost.



Website: www.frpmfg.com
Toll Free: 1-866-722-6246

| B-8000(W) FIBREGLASS WATER CISTERN | | DATE: 04-19-2018 | DWG SCALE: |
|------------------------------------|---|------------------|------------|
| Overall Length: | Approx. 8,661mm (28'5") | BY: MPS | REV: 2 |
| Overall Weight: | Approx. 1,406 kg (3,100 lbs) | DATE: | |
| Overall Capacity: | Approx. 36,642L (8,060 Imp Gal, 9,672 US Gal) | APPROVAL: | |



Drinking Water
NSF/ANSI 61