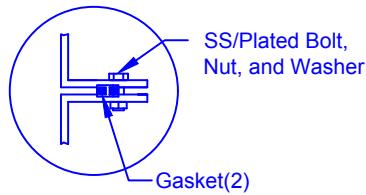


FLANGE CONNECTION DETAIL



SECTION-JOINT DETAIL



Optional Manway:

762 mm (30") dia. X

305, 762, 1524 or 2134 mm

(12, 30, 60 or 84") height

30"D Cap Lid w/8"D Poly screwout insert

2"D Outlet

Lift Lug

Flanged Manway is Bolted to Collar

Collar 762mm dia. (30") Bonded to Tank

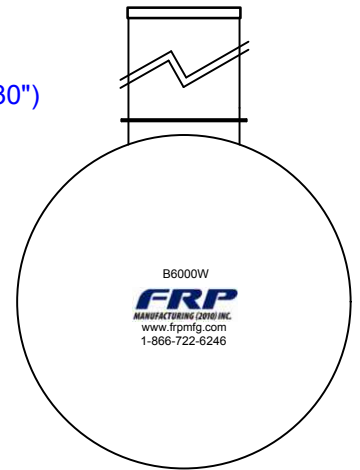
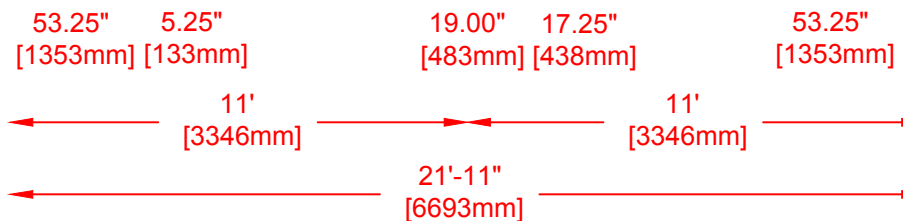
8'-6"  
[2582mm]

77"

Structural Ribs

Various fittings available including bulkhead fittings, pipe, flanged fittings, vents, etc. at extra cost.

Accessories available such as pump stand, 2nd manway, ladder, lock bar for lid, etc. at extra cost.



## Specifications

Cylinder Thickness	0.375"
End Cap Thickness	0.475"
Inlet Height (C.L.)	N/A
Outlet Height (C.L.)	48"
Inlet Diameter	N/A
Outlet Diameter	2"
Rib Dimension (C to C)	17.25"

**FRP**  
MANUFACTURING (2010) INC.

Website: [www.frpmfg.com](http://www.frpmfg.com)  
Toll Free: 1-866-722-6246

### B6000W FIBREGLASS WATER CISTERN

Overall Length:	Approx. 6,693mm (21'11")
Overall Weight:	Approx. 1,111 kg (2,450 lbs)
Overall Capacity:	Approx. 22,886L (5,034 Imp Gal, 6,040 US Gal)

DATE: 04-12-2018

DWG SCALE:

BY: MPS

REV: 0

DATE:

APPROVAL:



Drinking Water  
NSF/ANSI 61