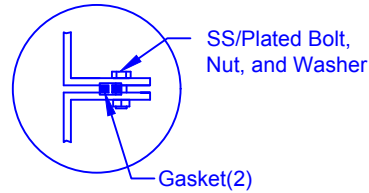


FLANGE CONNECTION DETAIL



Specifications	
Cylinder Thickness	0.375"
End Cap Thickness	0.475"
Inlet Height (C.L.)	N/A
Outlet Height (C.L.)	48"
Inlet Diameter	N/A
Outlet Diameter	2"
Rib Dimension (C to C)	17.25"

30"D Cap Lid w/8"D Poly screwout insert

Optional Manway:
762 mm (30") dia. X
305, 762, 1524 or 2134 mm
(12, 30, 60 or 84") height

Lift Lug

Flanged Manway is Bolted to Collar

762mm (30") dia. Collar Bonded to Tank

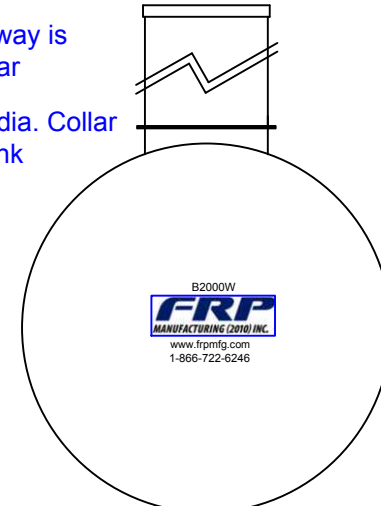
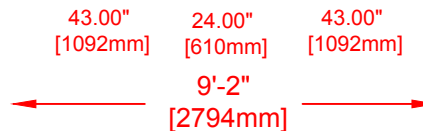
2"D Outlet

8'-6"
[2591mm]

Structural Ribs

Various fittings available including bulkhead fittings, pipe, flanged fittings, vents, etc. at extra cost.

Accessories available such as pump stand, 2nd manway, ladder, lock bar for lid, etc. at extra cost.



FRP
MANUFACTURING (2010) INC.
Website: www.frpmfg.com
Toll Free: 1-866-722-6246

B2000W FIBREGLASS WATER CISTERN		DATE: 03-22-2018	DWG SCALE:
Overall Length:	Approx. 2,794mm (9' 2")	BY: MPS	REV: 2
Overall Weight:	Approx. 499 kg (1,100 lbs)	BURIAL DEPTH: 7'	
Overall Capacity:	Approx. 9,092L (2,000 Imp Gal, 2,400 US Gal)	APPROVAL:	

Drinking Water
NSF/ANSI 61