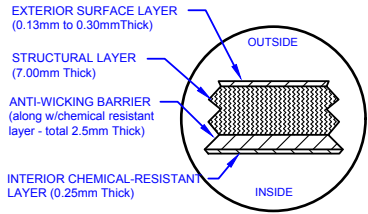


Specifications	
Cylinder Thickness	0.375"
End Cap Thickness	0.475"
Inlet Height (C.L.)	N/A
Outlet Height (C.L.)	48"
Inlet Diameter	N/A
Outlet Diameter	2"
Rib Dimension (C to C)	17.25"

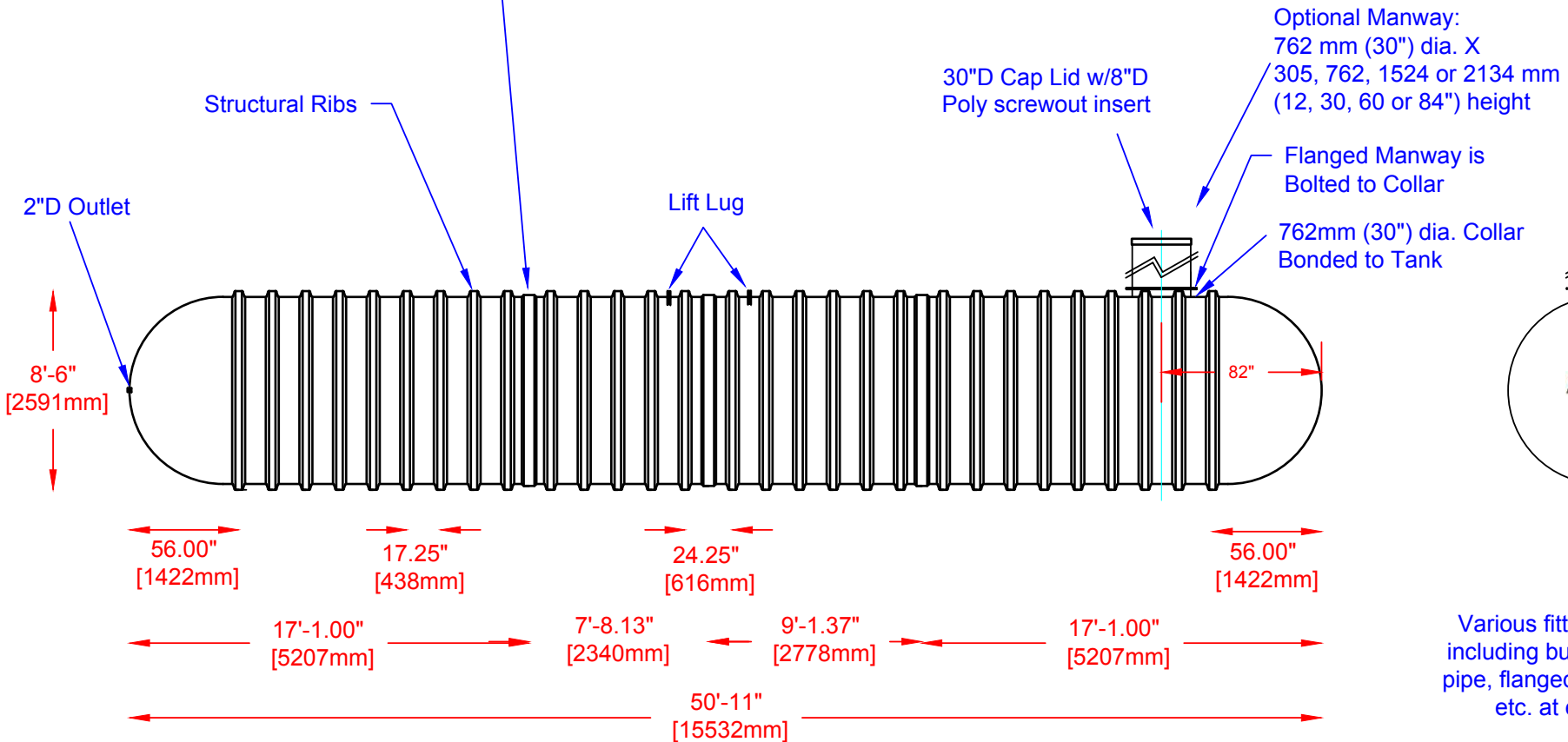
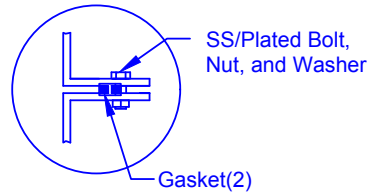
LAMINATE DETAIL



SECTION-JOINT DETAIL



FLANGE CONNECTION DETAIL



Various fittings available including bulkhead fittings, pipe, flanged fittings, vents, etc. at extra cost.

FRP
MANUFACTURING (2010) INC.
Website: www.frpmpg.com
Toll Free: 1-866-722-6246

B15000W FIBREGLASS WATER CISTERN		DATE: 06-29-2018	REV: 3
Overall Length:	Approx. 15,532mm (50'11")	BY: MPS	
Overall Weight:	Approx. 2,948 kg (6,500 lbs)	DATE:	
Overall Capacity:	Approx. 68,656 (15,102 Imp Gal, 18,122 US Gal)	APPROVAL:	



Drinking Water
NSF/ANSI 61