

4

3

2

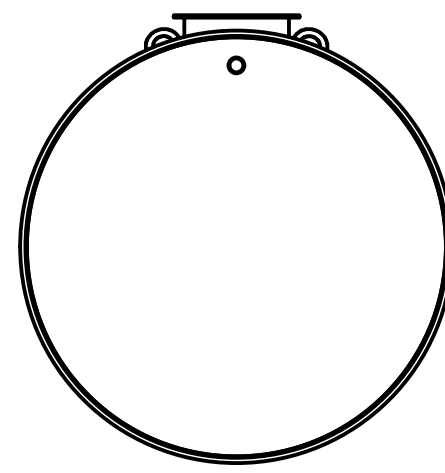
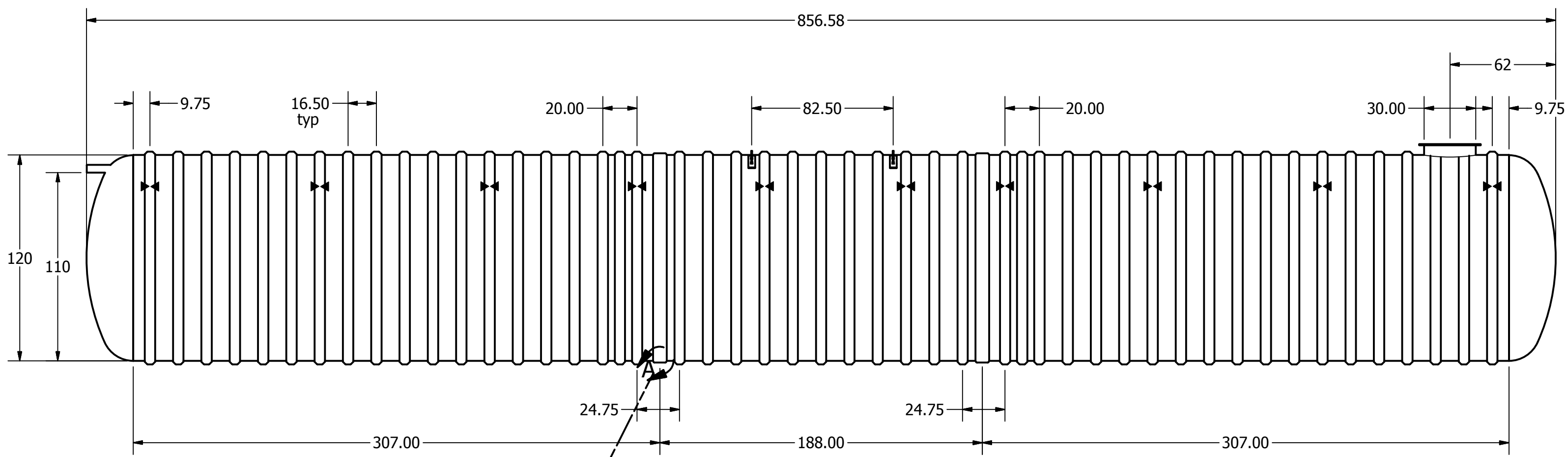
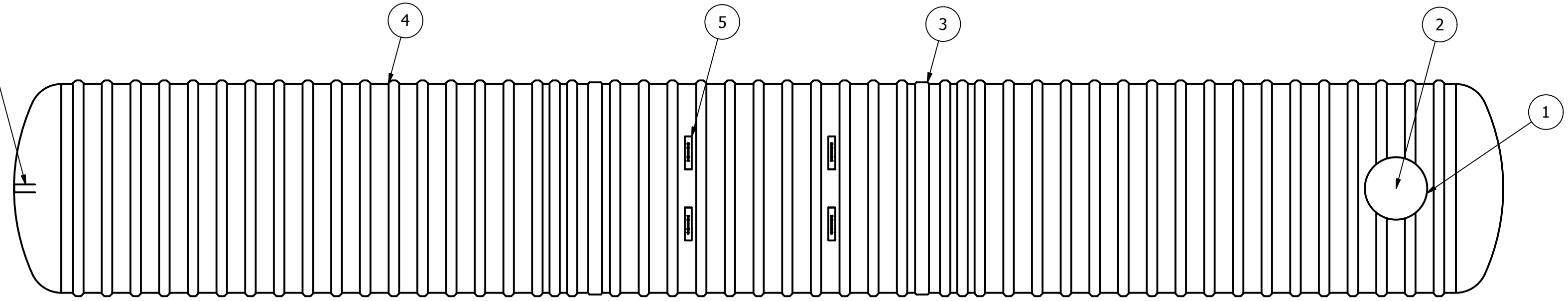
1

REVISION HISTORY

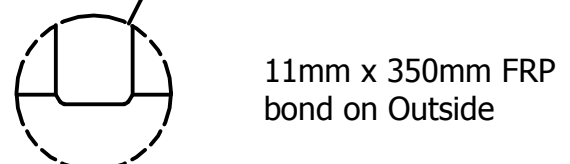
REV	DESCRIPTION	DATE	APPROVED
1	RIB SPACING	10/30/2010	JMC
2	DRAWING REVISION	3/10/2014	MPS

PARTS LIST

ITEM	QTY	PART NUMBER	DESCRIPTION
1	1	C-COLLAR-30IN	30"D COLLAR
2	1	C-LID-30IN-STD	30"D STANDARD LID
3	2	C-SEAM-10FT	SEAM
4	49	C-RIB-NEW	STRUCTURAL RIB
5	4	LIFT LUG-PLATE	LIFT LUG
6	1	CONNECTION-4IN-STUB PIPE	4"D STUB PIPE-INLET



120
110



SECTIONAL JOINT DETAIL A
SCALE 1/20

Anchor Location

Item	(")	C	Item	(")
Cylinder Thickness	0.550"		Liquid Depth (holding tank)	110"
End Cap Thickness	1.03"		Septic Chamber Depth	N/A
Inlet Height (C.L.)	112"		Effluent Chamber Depth	N/A
Outlet Height (C.L.)	N/A		Chamber Wall Dimensions	N/A
Inlet Diameter	4"		Height:	N/A
Outlet Diameter	N/A		Thickness:	N/A
Rib Dimension (C to C)	16.5"		Opening Diameter:	N/A

DRAWN MPS	3/10/2014	TITLE BX34000S DEEP BURY UNDERGROUND FIBREGLASS SEWAGE HOLDING TANK
CHECKED		
MFG		
APPROVED		
WEIGHT 6,872 kg (15,150 lbs)	LENGTH 71' 5"	
WORKING CAPACITY 149,100L (32,798 IG, 39,358 USG)		
OVERALL CAPACITY 155,090L (34,116 IG, 40,939 USG)		



SIZE C	DWG NO BX34000S-DB-02	REV 2
SCALE 10' Burial Depth	SHEET 1 OF 1	