

4

3

2

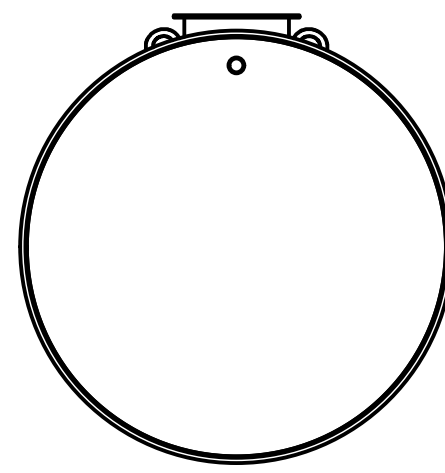
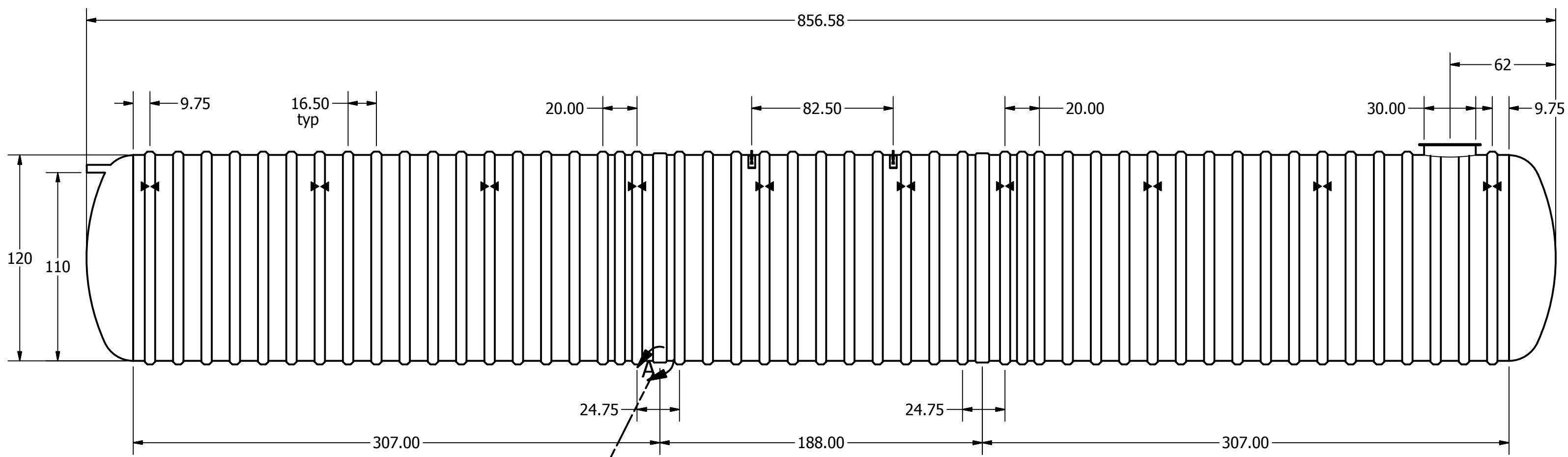
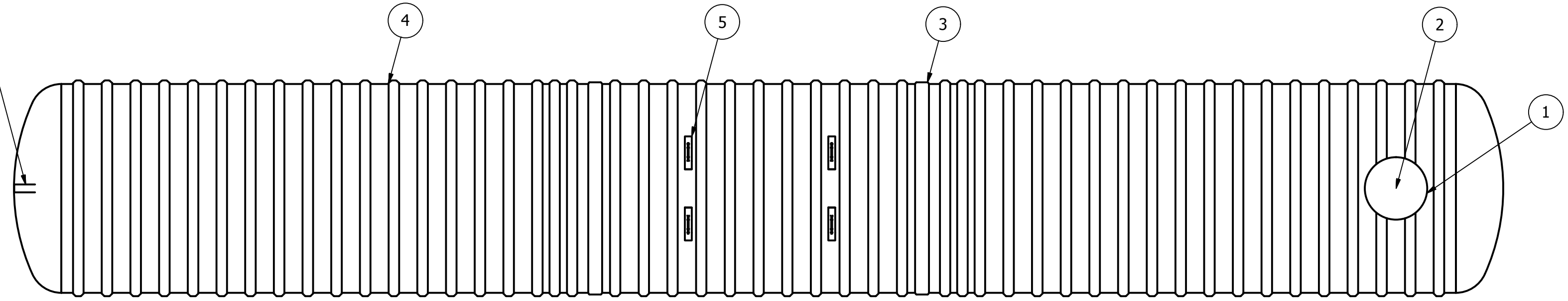
1

REVISION HISTORY

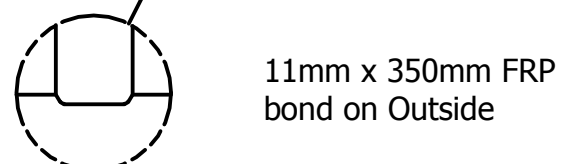
REV	DESCRIPTION	DATE	APPROVED
1	RIB SPACING	10/30/2010	JMC
2	DRAWING REVISION	3/10/2014	MPS

PARTS LIST

ITEM	QTY	PART NUMBER	DESCRIPTION
1	1	C-COLLAR-30IN	30"D COLLAR
2	1	C-LID-30IN-STD	30"D STANDARD LID
3	2	C-SEAM-10FT	SEAM
4	49	C-RIB-NEW	STRUCTURAL RIB
5	4	LIFT LUG-PLATE	LIFT LUG
6	1	CONNECTION-4IN-STUB PIPE	4"D STUB PIPE-INLET



120
110



SECTIONAL JOINT DETAIL A
SCALE 1/20

Anchor Location

Item	(")	C	Item	(")
Cylinder Thickness	0.525"		Liquid Depth (holding tank)	110"
End Cap Thickness	0.94"		Septic Chamber Depth	N/A
Inlet Height (C.L.)	112"		Effluent Chamber Depth	N/A
Outlet Height (C.L.)	N/A		Chamber Wall Dimensions	N/A
Inlet Diameter	4"		Height:	N/A
Outlet Diameter	N/A		Thickness:	N/A
Rib Dimension (C to C)	16.5"		Opening Diameter:	N/A

DRAWN
MPS
3/10/2014
CHECKED

MFG
APPROVED

WEIGHT
6,373 kg (14,050 lbs)

LENGTH
71' 5"

WORKING CAPACITY
149,100L (32,798 IG, 39,358 USG)

OVERALL CAPACITY
155,090L (34,116 IG, 40,939 USG)

TITLE
BX34000S UNDERGROUND FIBREGLASS
SEWAGE HOLDING TANK



SIZE
C

DWG NO
BX34000S-02

REV
2

SCALE
7' Burial Depth

SHEET 1 OF 1