

4

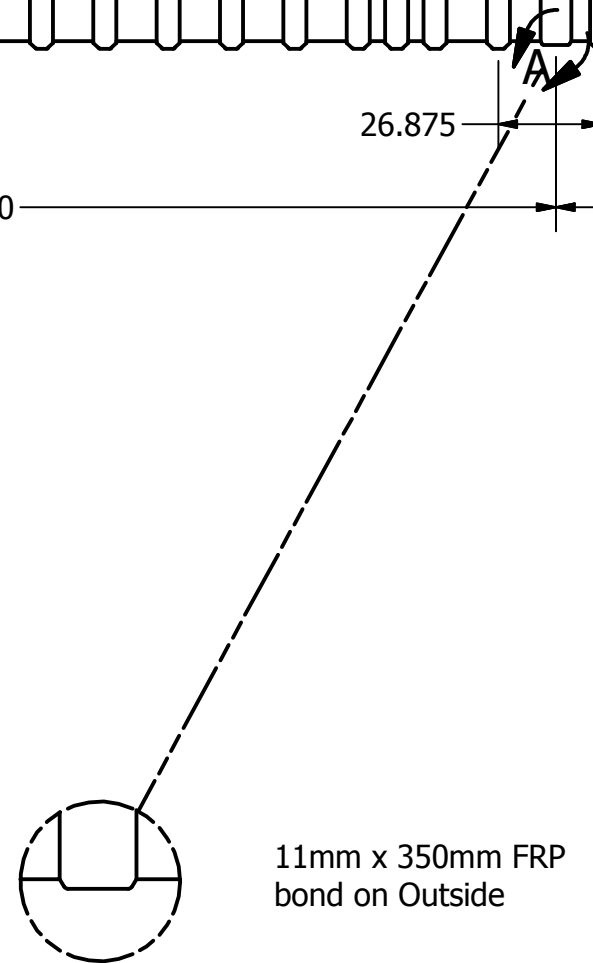
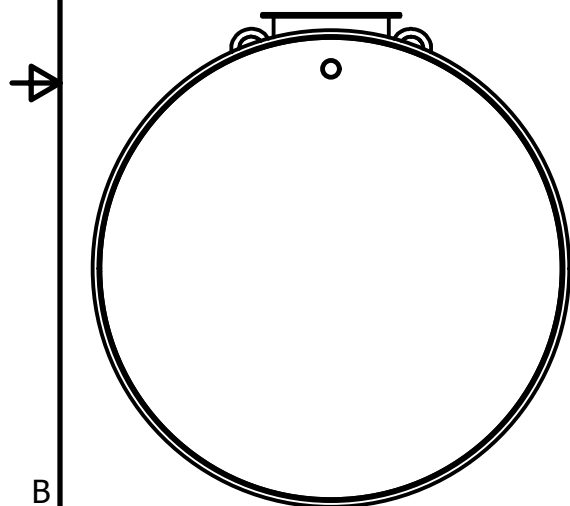
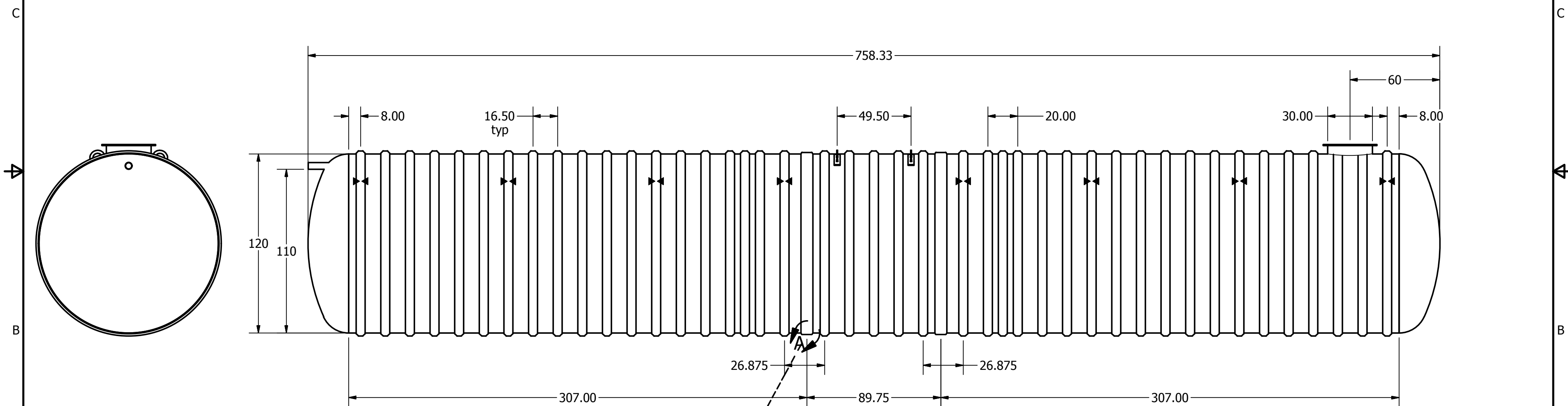
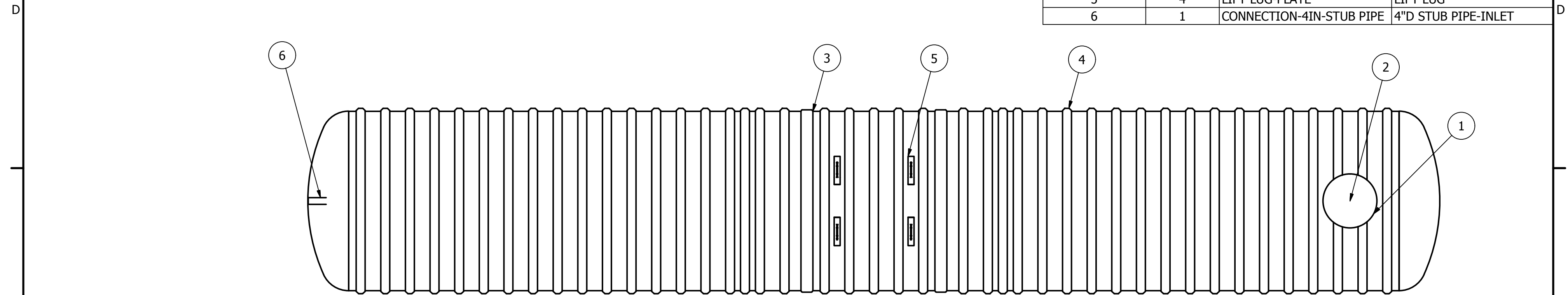
3

2

1

REVISION HISTORY			
REV	DESCRIPTION	DATE	APPROVED
1	RIB SPACING	10/20/2010	JMC
2	DRAWING REVISION	3/7/2014	MPS



PARTS LIST			
ITEM	QTY	PART NUMBER	DESCRIPTION
1	1	C-COLLAR-30IN	30"D COLLAR
2	1	C-LID-30IN-STD	30"D STANDARD LID
3	2	C-SEAM-10FT	SEAM
4	43	C-RIB-NEW	STRUCTURAL RIB
5	4	LIFT LUG-PLATE	LIFT LUG
6	1	CONNECTION-4IN-STUB PIPE	4"D STUB PIPE-INLET



SECTIONAL JOINT DETAIL A
SCALE 1/20

Anchor Location

Item	(")	C	Item	(")
Cylinder Thickness	0.500"		Liquid Depth (holding tank)	110"
End Cap Thickness	1.03"		Septic Chamber Depth	N/A
Inlet Height (C.L.)	112"		Effluent Chamber Depth	N/A
Outlet Height (C.L.)	N/A		Chamber Wall Dimensions	N/A
Inlet Diameter	4"		Height:	N/A
Outlet Diameter	N/A		Thickness:	N/A
Rib Dimension (C to C)	16.5"		Opening Diameter:	N/A

DRAWN MPS 3/7/2014	CHECKED	TITLE BX30000S DEEP BURY UNDERGROUND FIBREGLASS SEWAGE HOLDING TANK
MFG	APPROVED	 
WEIGHT 5,874 kg (12,950 lbs)	LENGTH 63' 7"	
WORKING CAPACITY 132,010L (29,038 IG, 34,846 USG)	SCALE 10' Burial Depth	SIZE C
OVERALL CAPACITY 137,302L (30,202 IG, 36,242 USG)		DWG NO BX30000S-DB-02
		REV 2
		SHEET 1 OF 1