

4

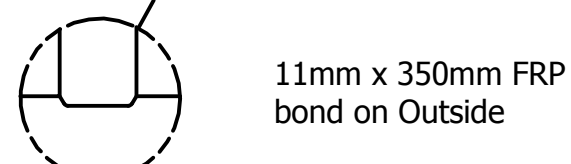
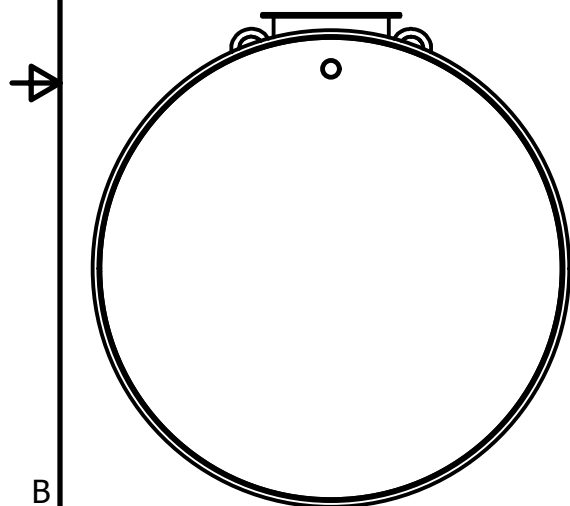
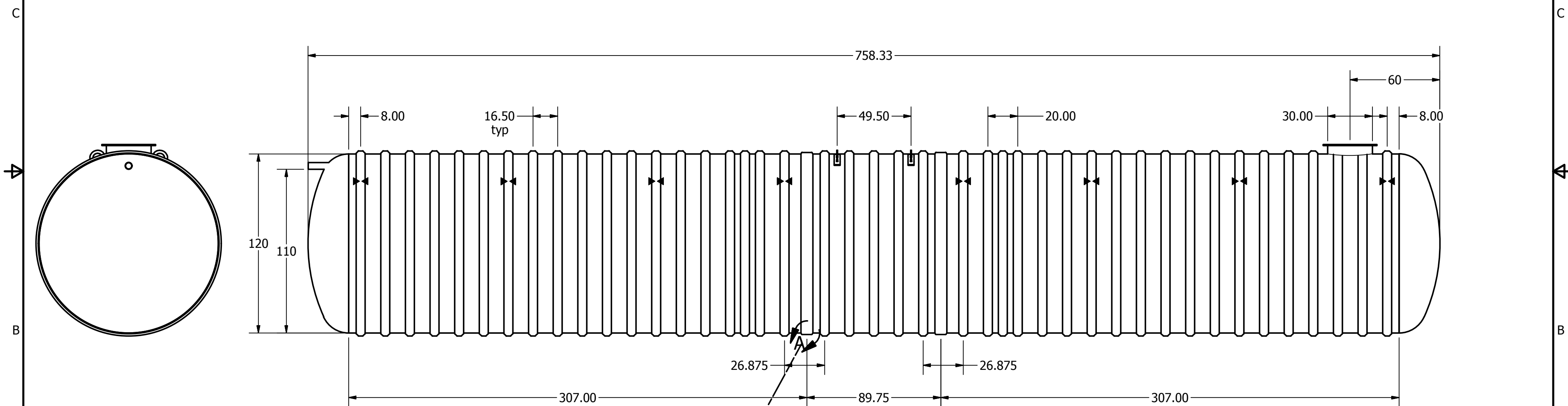
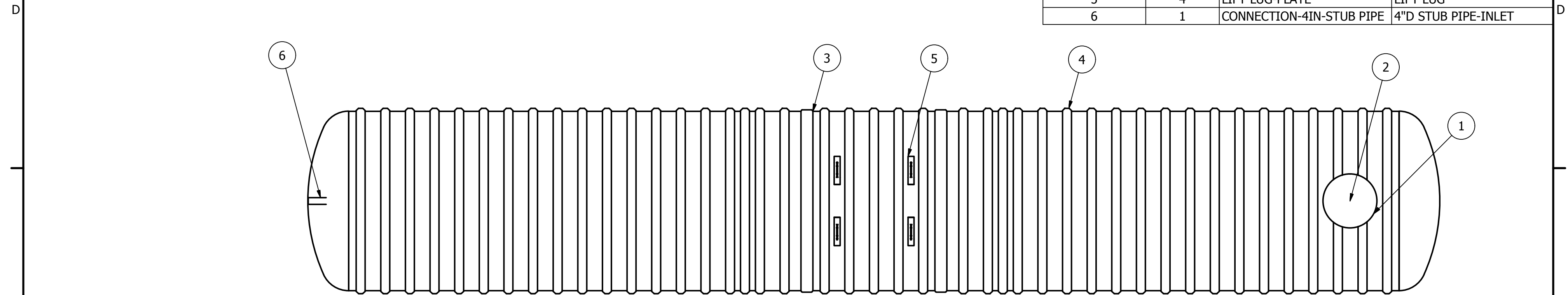
3

2

1

REVISION HISTORY			
REV	DESCRIPTION	DATE	APPROVED
1	RIB SPACING	10/20/2010	JMC
2	DRAWING REVISION	3/7/2014	MPS

PARTS LIST			
ITEM	QTY	PART NUMBER	DESCRIPTION
1	1	C-COLLAR-30IN	30"D COLLAR
2	1	C-LID-30IN-STD	30"D STANDARD LID
3	2	C-SEAM-10FT	SEAM
4	43	C-RIB-NEW	STRUCTURAL RIB
5	4	LIFT LUG-PLATE	LIFT LUG
6	1	CONNECTION-4IN-STUB PIPE	4"D STUB PIPE-INLET



SECTIONAL JOINT DETAIL A  
SCALE 1/20

Anchor Location

Item	(")	C	Item	(")
Cylinder Thickness	0.450"		Liquid Depth (holding tank)	110"
End Cap Thickness	0.94"		Septic Chamber Depth	N/A
Inlet Height (C.L.)	112"		Effluent Chamber Depth	N/A
Outlet Height (C.L.)	N/A		Chamber Wall Dimensions	N/A
Inlet Diameter	4"		Height:	N/A
Outlet Diameter	N/A		Thickness:	N/A
Rib Dimension (C to C)	16.5"		Opening Diameter:	N/A

DRAWN MPS	3/7/2014	TITLE BX30000S UNDERGROUND FIBREGLASS SEWAGE HOLDING TANK	
CHECKED			
MFG			
APPROVED		SIZE C	DWG NO BX30000S-02
WEIGHT 5,216 kg (11,500 lbs)	LENGTH 63' 7"	SCALE	REV 2
WORKING CAPACITY 132,010L (29,038 IG, 34,846 USG)		7' Burial Depth	
OVERALL CAPACITY 137,302L (30,202 IG, 36,242 USG)		SHEET 1 OF 1	