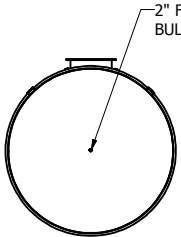
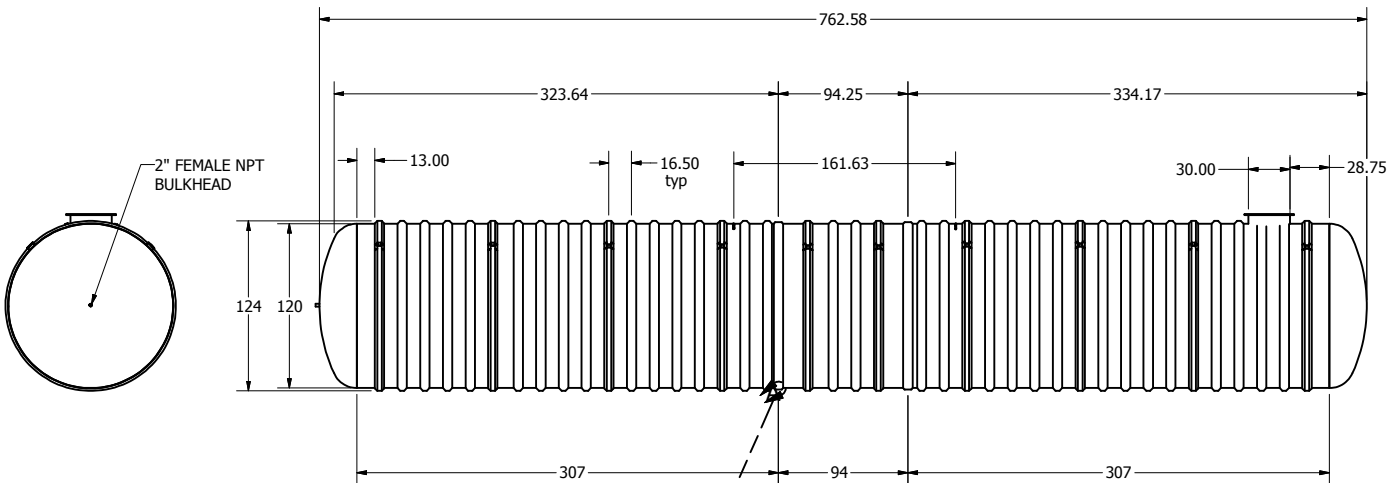
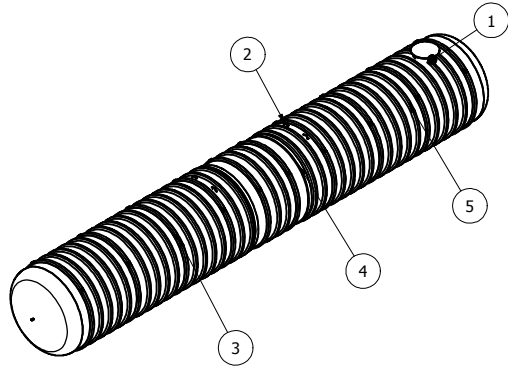
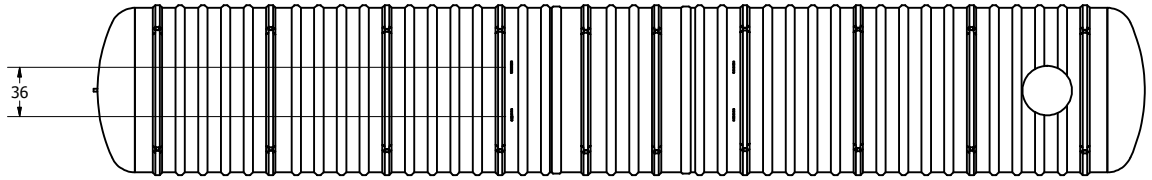


Parts List			
ITEM	QTY	PART NUMBER	DESCRIPTION
1	1	C-COLLAR-30IN	30"D COLLAR
2	4	LIFT-LUG-8-10	LIFT LUG
3	10	C-RIB-GUIDE	STURUCTURAL RIB WITH ANCHOR GUIDE
4	2	SEAM-10FT	SEAM
5	30	C-RIB	STRUCTURAL RIB





6mm x 200mm min. FRP bond on Outside

SECTIONAL JOINT DETAIL A
SCALE 1/25

OPTIONAL	PARTS
30"x12" EXTENSION	ANCHORS
30"x30" EXTENSION	FOAM INSULATION
30"x60" EXTENSION	LOCK BAR
30"x84" EXTENSION	OPTIONAL FITTING(S)
ALARM	PUMP STAND

DRAWN	MPS	12/14/2007
CHECKED		
QA		
MFG		
DCL		
APPROVED		
DCL		
CAPACITY	LENGTH	
136,380L	63' 7"	
(30,000 IG)		

TITLE		BX30000W UNDERGROUND FIBREGLASS WATER CISTERN	
 Drinking Water NSF/ANSI 61		 FRP MANUFACTURING (2010) INC.	
SIZE	DWG NO	REV	
C	BX30000W	1	
SCALE	SHEET 1 OF 1		