

4

3

2

1

REVISION HISTORY

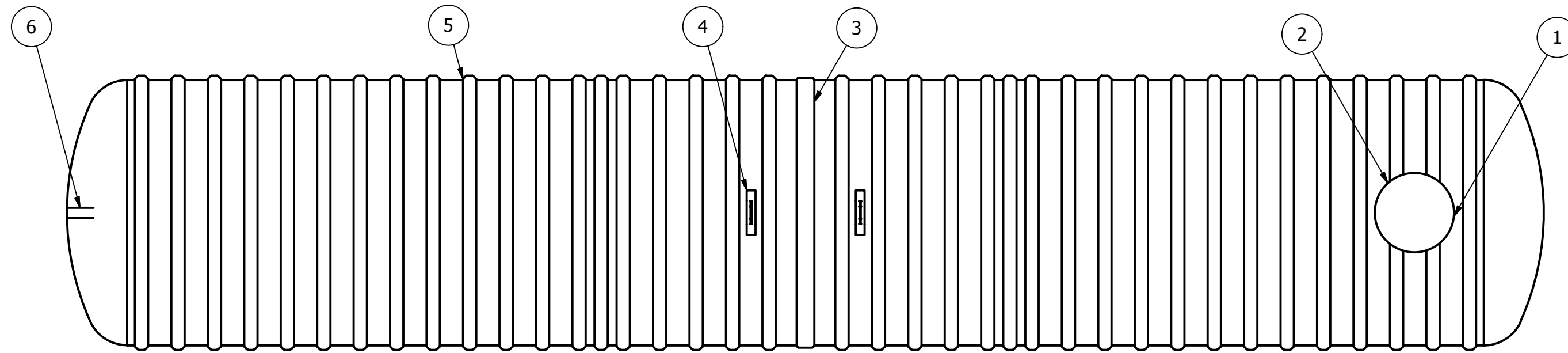
REV	DESCRIPTION	DATE	APPROVED
1	RIB SPACING	10/30/2010	JMC
2	DRAWING REVISION	3/7/2014	MPS

PARTS LIST

ITEM	QTY	PART NUMBER	DESCRIPTION
1	1	C-COLLAR-30IN	30"D COLLAR
2	1	C-LID-30IN-STD	30"D STANDARD LID
3	1	C-SEAM-10FT	SEAM
4	2	LIFT LUG-PLATE	
5	38	C-RIB-NEW	STRUCTURAL RIB
6	1	CONNECTION-4IN-STUB PIPE	4"D STUB PIPE-INLET

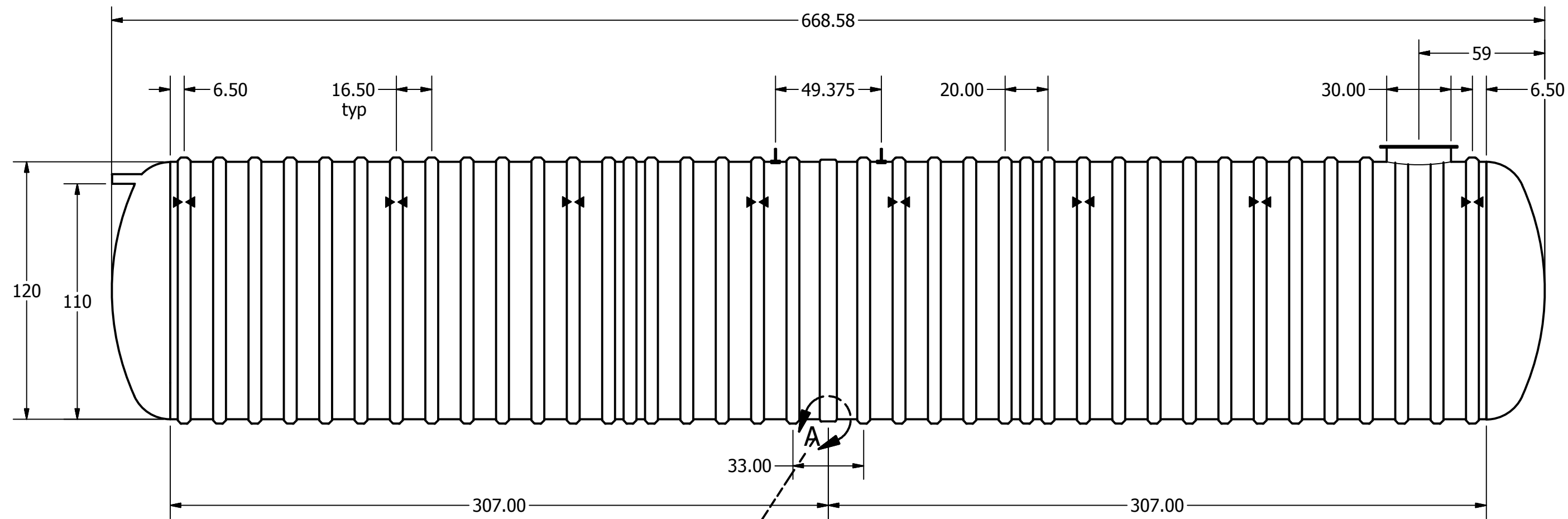
D

D



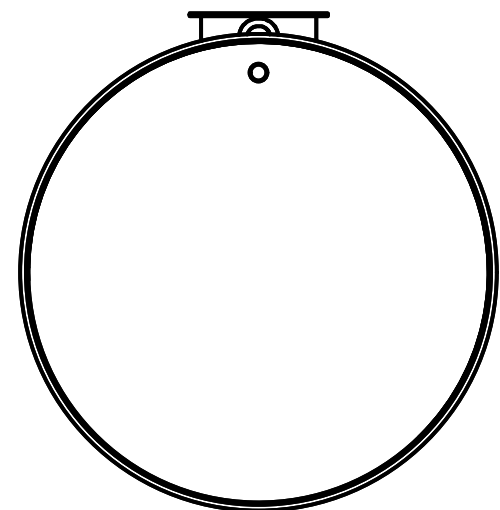
C

C



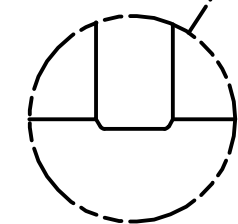
B

B



A

A



11mm x 350mm FRP bond on Outside

SECTIONAL JOINT DETAIL A  
SCALE 1/20

Anchor Location

Item	(")	C	Item	(")
Cylinder Thickness	0.450"		Liquid Depth (holding tank)	110"
End Cap Thickness	1.03"		Septic Chamber Depth	N/A
Inlet Height (C.L.)	112"		Effluent Chamber Depth	N/A
Outlet Height (C.L.)	N/A		Chamber Wall Dimensions	N/A
Inlet Diameter	4"		Height:	N/A
Outlet Diameter	N/A		Thickness:	N/A
Rib Dimension (C to C)	16.5"		Opening Diameter:	N/A

DRAWN MPS	3/5/2014	TITLE BX26000S DEEP BURY UNDERGROUND FIBREGLASS SEWAGE HOLDING TANK
CHECKED		
MFG		
APPROVED		
WEIGHT 4,763 kg (10,500 lbs)	LENGTH 55' 9"	
WORKING CAPACITY 115,680L (25,446 IG, 30,535 USG)	SCALE C	DWG NO BX26000S-DB-02
OVERALL CAPACITY 120,255L (26,452 IG, 31,742 USG)	SCALE 10' Burial Depth	REV 2

