

4

3

2

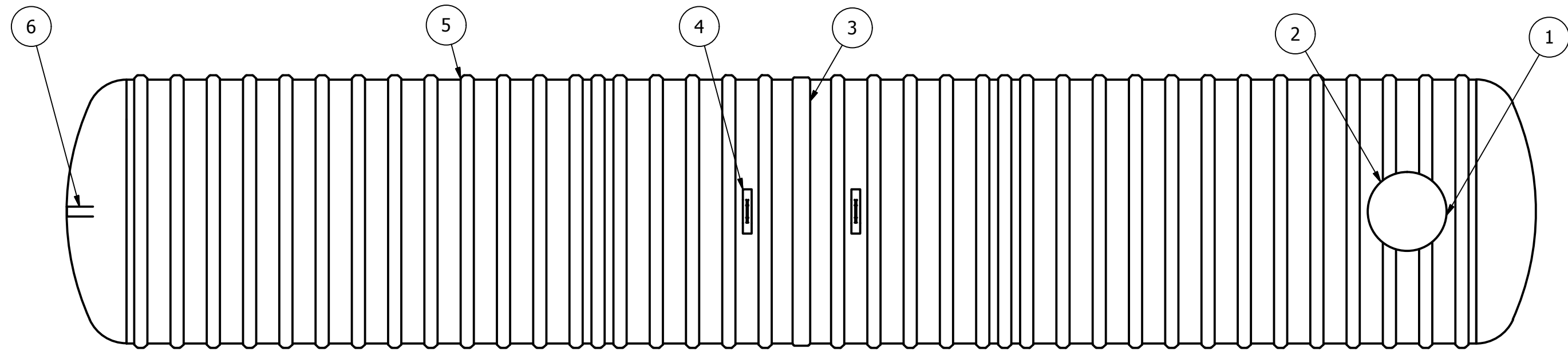
1

REVISION HISTORY			
REV	DESCRIPTION	DATE	APPROVED
1	RIB SPACING	10/30/2010	JMC
2	DRAWING REVISION	3/7/2014	MPS

PARTS LIST			
ITEM	QTY	PART NUMBER	DESCRIPTION
1	1	C-COLLAR-30IN	30"D COLLAR
2	1	C-LID-30IN-STD	30"D STANDARD LID
3	1	C-SEAM-10FT	SEAM
4	2	LIFT LUG-PLATE	
5	38	C-RIB-NEW	STRUCTURAL RIB
6	1	CONNECTION-4IN-STUB PIPE	4"D STUB PIPE-INLET

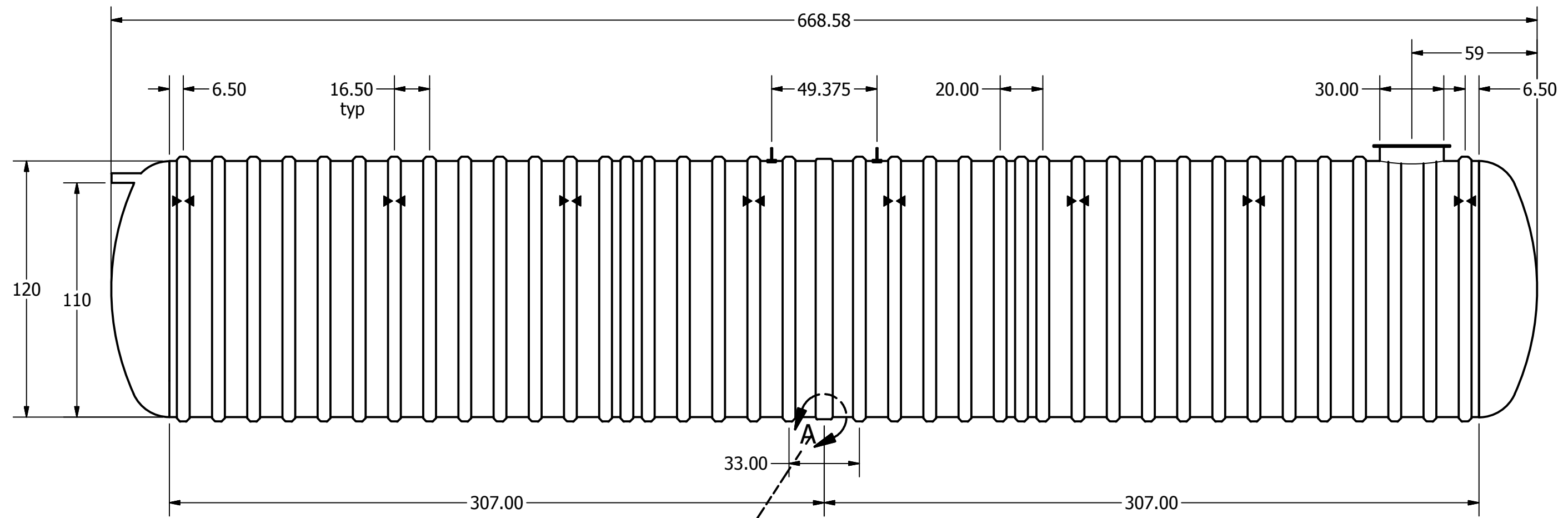
D

D



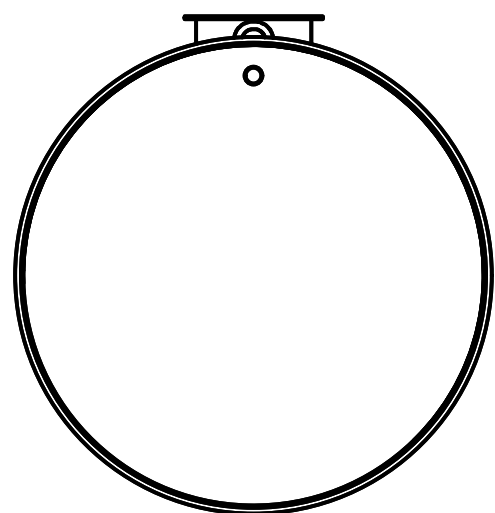
C

C



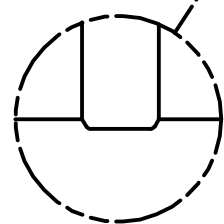
B

B



A

A



11mm x 350mm FRP
bond on Outside

SECTIONAL JOINT DETAIL A
SCALE 1/20

Anchor Location

Item	(")	C	Item	(")
Cylinder Thickness	0.475"		Liquid Depth (holding tank)	110"
End Cap Thickness	0.94"		Septic Chamber Depth	N/A
Inlet Height (C.L.)	112"		Effluent Chamber Depth	N/A
Outlet Height (C.L.)	N/A		Chamber Wall Dimensions	N/A
Inlet Diameter	4"		Height:	N/A
Outlet Diameter	N/A		Thickness:	N/A
Rib Dimension (C to C)	16.5"		Opening Diameter:	N/A

DRAWN MPS	3/5/2014	TITLE BX26000S UNDERGROUND FIBREGLASS SEWAGE HOLDING TANK
CHECKED		
MFG		
APPROVED		
WEIGHT 4,695 kg (10,350 lbs)	LENGTH 55' 9"	
WORKING CAPACITY 115,680L (25,446 IG, 30,535 USG)		
OVERALL CAPACITY 120,255L (26,452 IG, 31,742 USG)		

		DWG NO BX26000S-02	REV 2
		SCALE	SHEET 1 OF 1

4

3

2

1