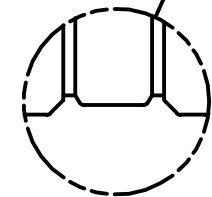
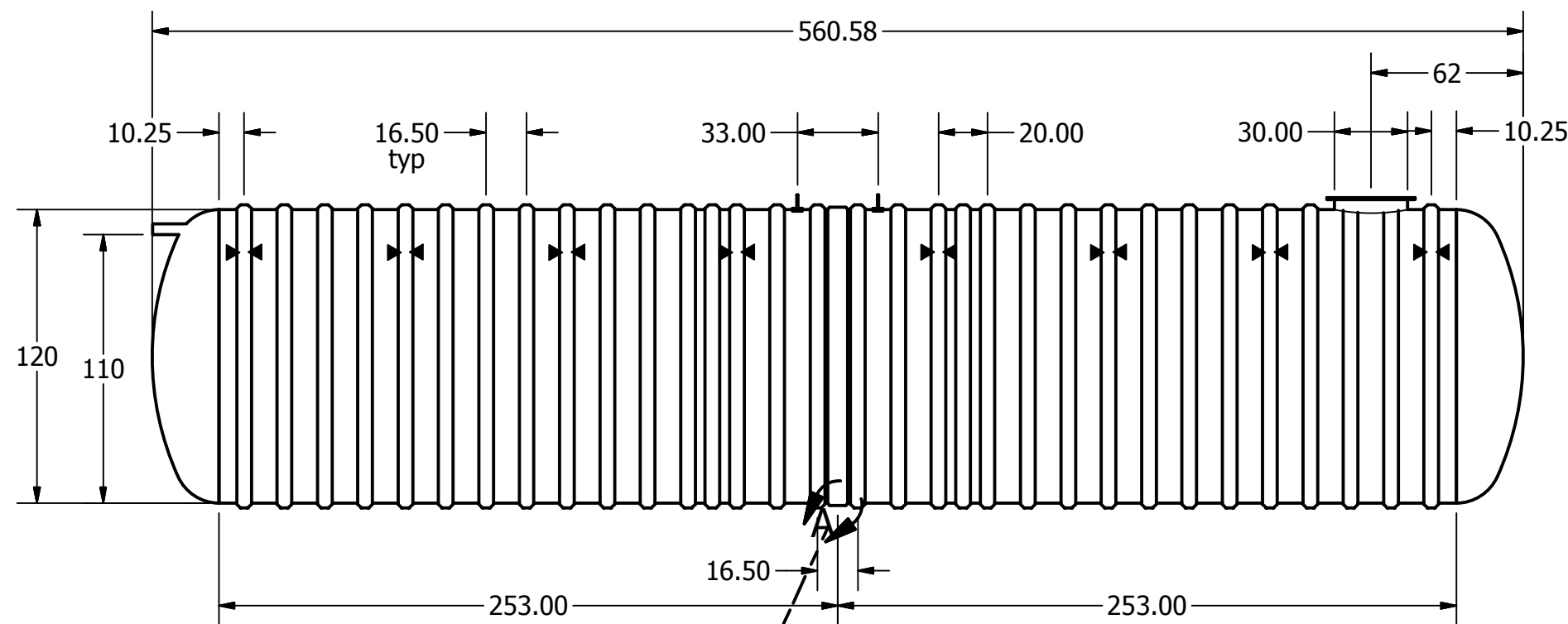
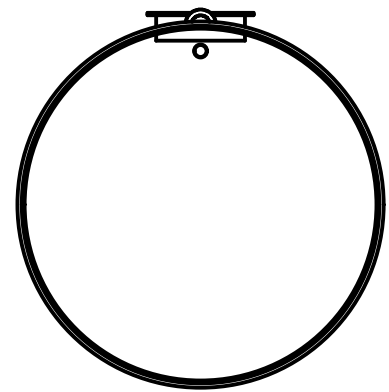
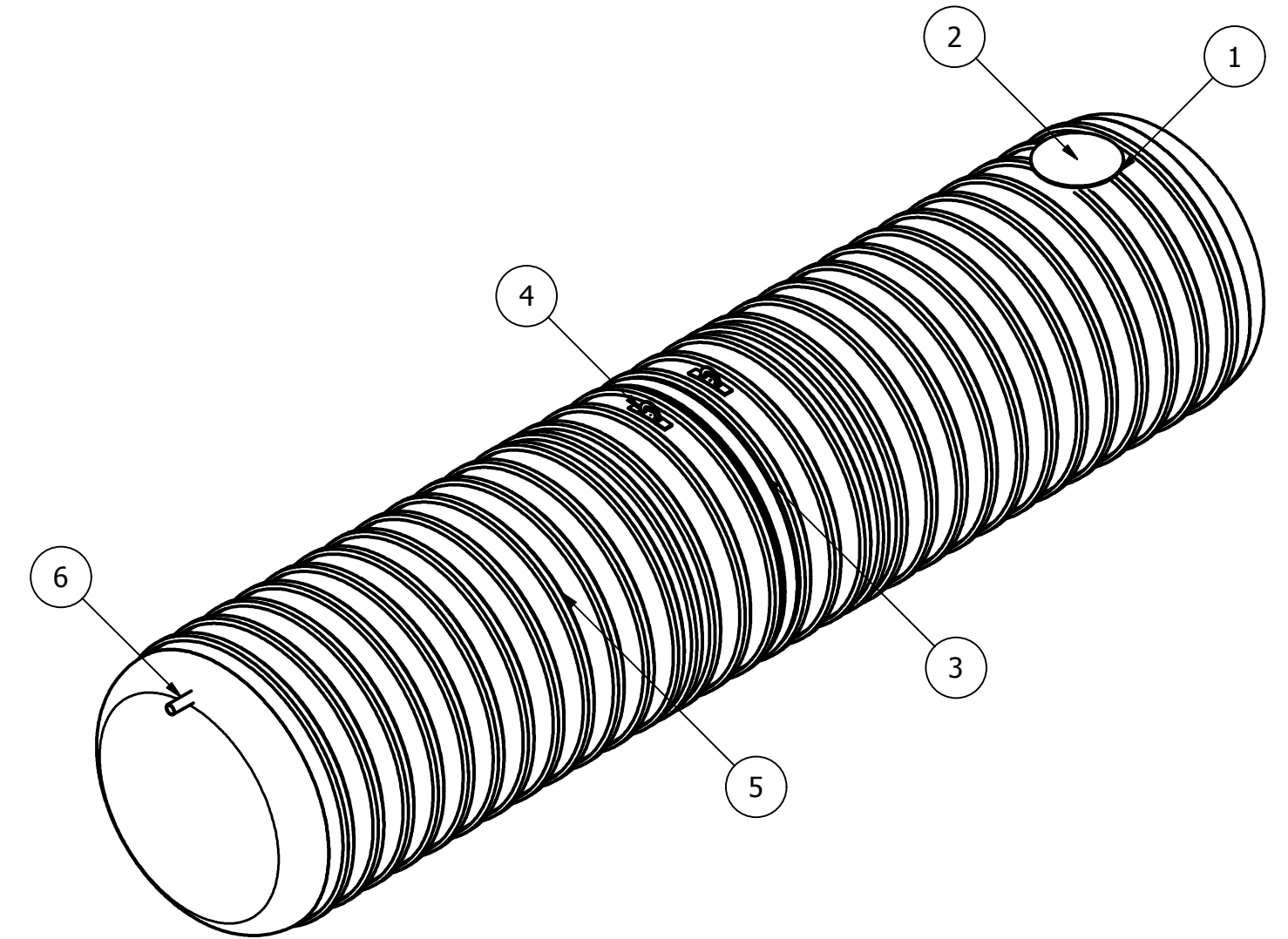
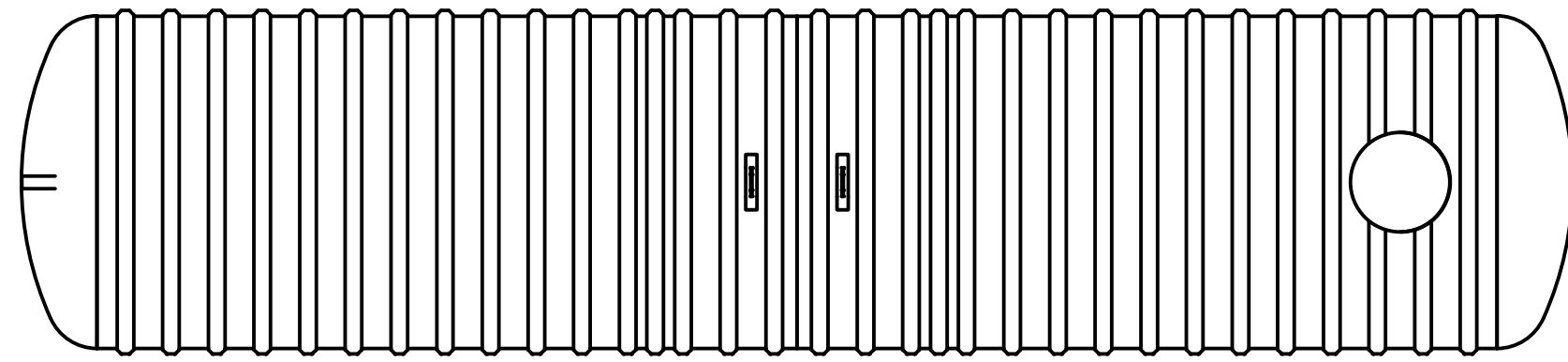


REVISION HISTORY			
REV	DESCRIPTION	DATE	APPROVED
1	RIB SPACING	9/30/2010	JMC
2	DRAWING REVISION	3/5/2014	MPS

PARTS LIST			
ITEM	QTY	PART NUMBER	DESCRIPTION
1	1	C-COLLAR-30IN	30"D COLLAR
2	1	C-LID-30IN-STD	30"D STANDARD LID
3	1	C-SEAM-10FT	SEAM
4	2	LIFT LUG-PLATE	LIFT LUG
5	28	C-RIB	STRUCTURAL RIB
6	1	CONNECTION-4IN-STUB PIPE	4"D STUB PIPE-INLET





11mm x 350mm FRP bond on Outside

SECTIONAL JOINT DETAIL A
SCALE 1/20

Anchor Location

Item	(")	C	Item	(")
Cylinder Thickness	0.425"		Liquid Depth (holding tank)	110"
End Cap Thickness	0.94"		Septic Chamber Depth	N/A
Inlet Height (C.L.)	112"		Effluent Chamber Depth	N/A
Outlet Height (C.L.)	N/A		Chamber Wall Dimensions	N/A
Inlet Diameter	4"		Height:	N/A
Outlet Diameter	N/A		Thickness:	N/A
Rib Dimension (C to C)	16.5"		Opening Diameter:	N/A

DRAWN	marks	3/5/2014	TITLE	BX22000S UNDERGROUND FIBREGLASS SEWAGE HOLDING TANK	
CHECKED			 		
MFG					
APPROVED			SIZE	C	DWG NO
WEIGHT	3,788 kg (8,350 lbs)	LENGTH	46' 9"		REV
WORKING CAPACITY	96,434L (21,213 IG, 25,456 USG)	SCALE	7' Burial Depth		2
OVERALL CAPACITY	100,244L (22,051 IG, 26,461 USG)				
			SHEET 1 OF 2		