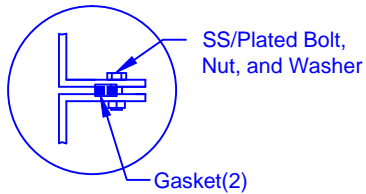


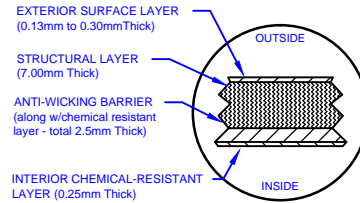
FLANGE CONNECTION DETAIL



SECTION-JOINT DETAIL

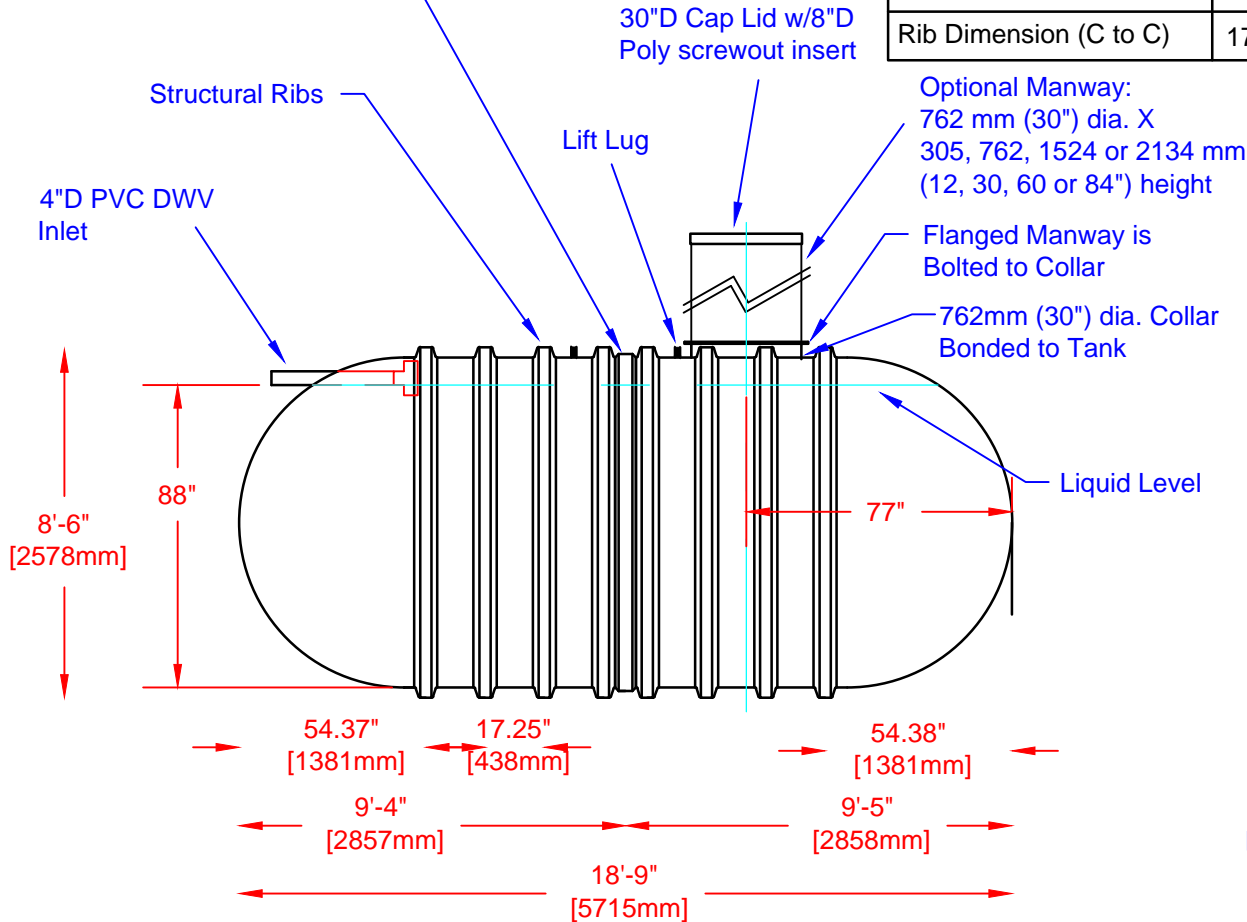


LAMINATE DETAIL



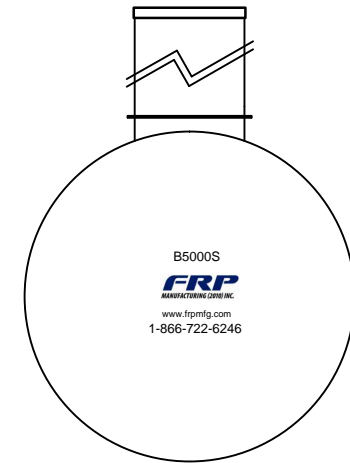
Specifications

Cylinder Thickness	0.375"	Liquid Depth (holding tank)	88"
End Cap Thickness	0.475"	Septic Chamber Depth	N/A
Inlet Height (C.L.)	90"	Effluent Chamber Depth	N/A
Outlet Height (C.L.)	N/A	Chamber Wall dimensions	
Inlet Diameter	4"	Height:	N/A
Outlet Diameter	N/A	Thickness:	N/A
Rib Dimension (C to C)	17.25"	Opening Diameter:	N/A



Optional Manway:
762 mm (30") dia. X
305, 762, 1524 or 2134 mm
(12, 30, 60 or 84") height

Flanged Manway is Bolted to Collar
762mm (30") dia. Collar Bonded to Tank



Various fittings available including bulkhead fittings, pipe, flanged fittings, vents, etc. at extra cost.



Website: www.frpmfg.com
Toll Free: 1-866-722-6246

B5000S FIBREGLASS SEWAGE HOLDING TANK		DATE: 01-30-2014	REV: 2
Overall Length:	Approx. 5,715mm (18'9")	BY: MPS	
Overall Weight:	Approx. 975 kg (2,150 lbs)	BURIAL DEPTH: 7 Ft	
Working Capacity:	Approx. 22,120L (4,866 Imp Gal, 5,839 US Gal)	DATE:	
Overall Capacity:	Approx. 22,886L (5,034 Imp Gal, 6,040 US Gal)	APPROVAL:	

