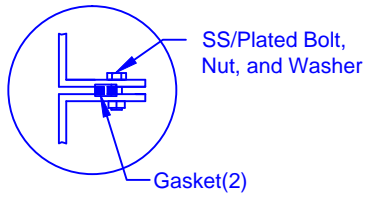


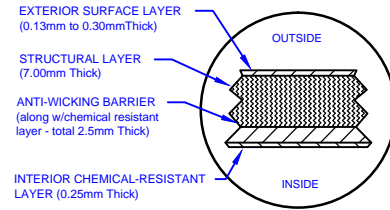
FLANGE CONNECTION DETAIL



SECTION-JOINT DETAIL

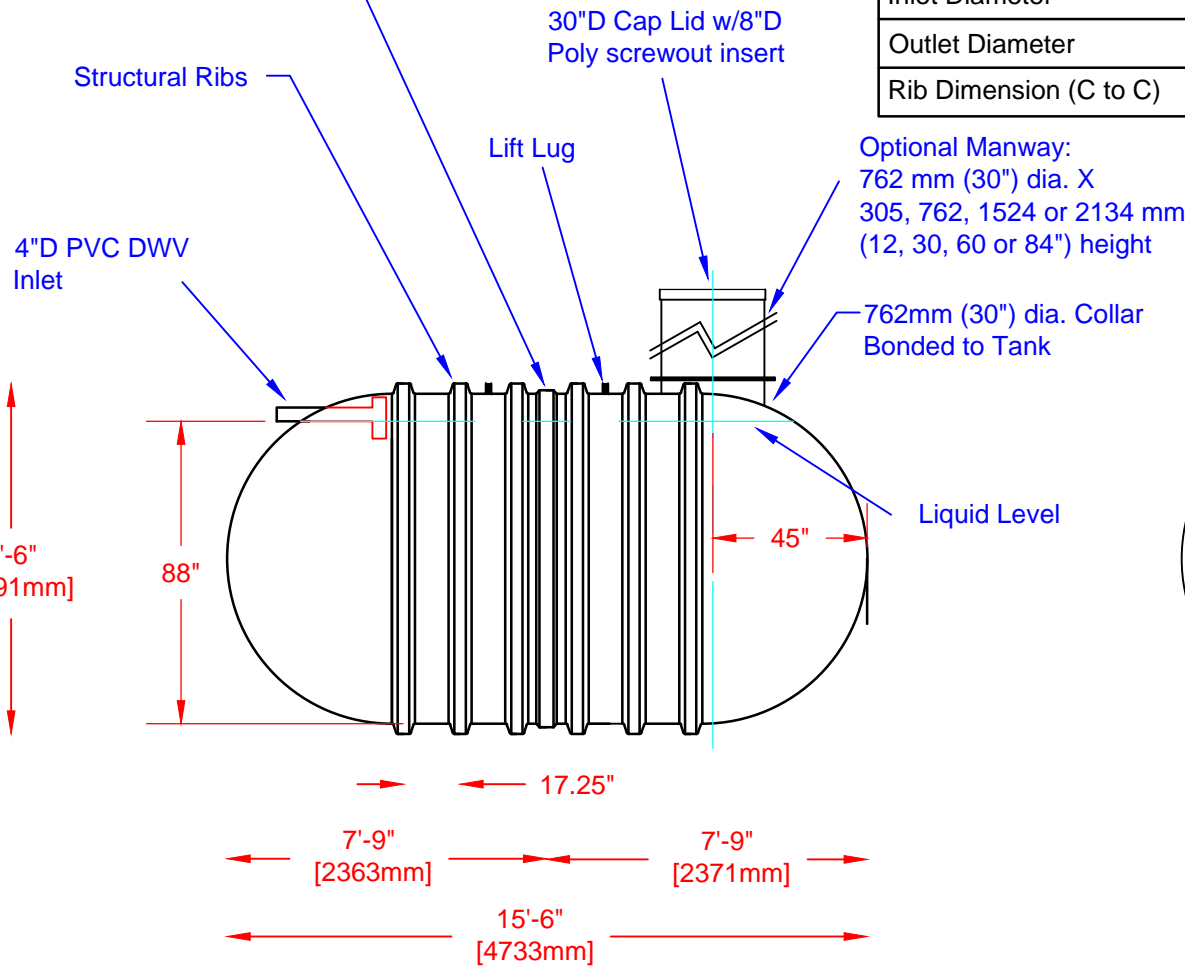


LAMINATE DETAIL

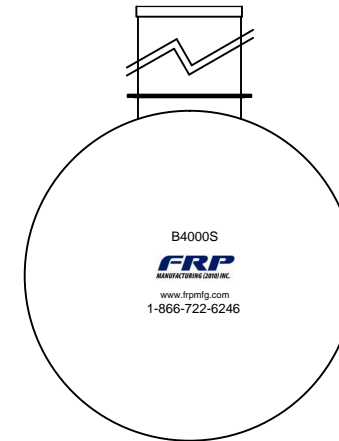


Specifications

Cylinder Thickness	0.375"	Liquid Depth (holding tank)	88"
End Cap Thickness	0.475"	Septic Chamber Depth	N/A
Inlet Height (C.L.)	90"	Effluent Chamber Depth	N/A
Outlet Height (C.L.)	N/A	Chamber Wall dimensions	
Inlet Diameter	4"	Height:	N/A
Outlet Diameter	N/A	Thickness:	N/A
Rib Dimension (C to C)	17.25"	Opening Diameter:	N/A



Optional Manway:
762 mm (30") dia. X
305, 762, 1524 or 2134 mm
(12, 30, 60 or 84") height



FRP
MANUFACTURING (2010) INC.

Website: www.frpmfg.com
Toll Free: 1-866-722-6246

B4000S FIBREGLASS SEWAGE HOLDING TANK		DATE: 01-30-2014	REV: 2
Overall Length:	Approx. 4,724mm (15'6")	BY: MPS	
Overall Weight:	Approx. 816 kg (1,800 lbs)	BURIAL DEPTH: 7 Ft	
Working Capacity:	Approx. 17,680L (3,889 Imp Gal, 4,667 US Gal)	DATE:	
Overall Capacity:	Approx. 18,262L (4,016 Imp Gal, 4,819 US Gal)	APPROVAL:	

