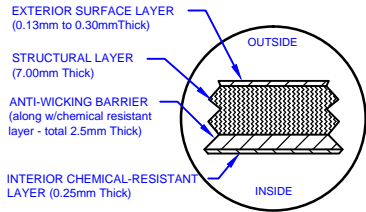


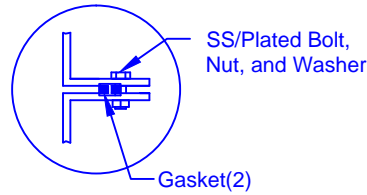
LAMINATE DETAIL



SECTION-JOINT DETAIL

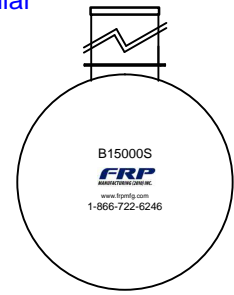
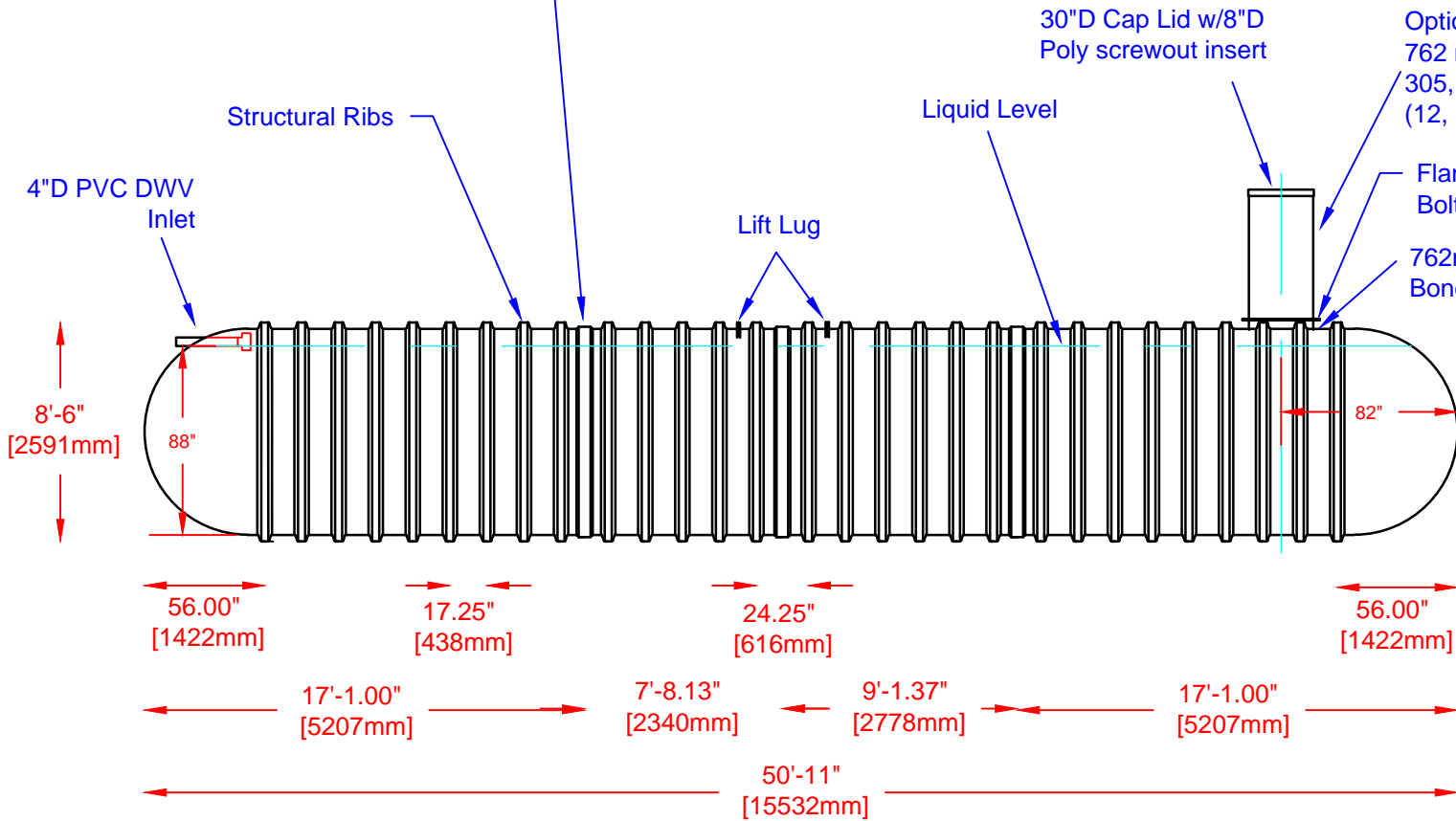


FLANGE CONNECTION DETAIL



Specifications

Cylinder Thickness	0.375"	Liquid Depth (holding tank)	88"
End Cap Thickness	0.475"	Septic Chamber Depth	N/A
Inlet Height (C.L.)	90"	Effluent Chamber Depth	N/A
Outlet Height (C.L.)	N/A	Chamber Wall dimensions	
Inlet Diameter	4"	Height:	N/A
Outlet Diameter	N/A	Thickness:	N/A
Rib Dimension (C to C)	17.25"	Opening Diameter:	N/A



Various fittings available including bulkhead fittings, pipe, flanged fittings, vents, etc. at extra cost.

FRP
MANUFACTURING (2010) INC.
Website: www.frpmfg.com
Toll Free: 1-866-722-6246

B15000S FIBREGLASS SEWAGE HOLDING TANK		DATE: 01-30-2014	REV: 2
Overall Length:	Approx. 15,532mm (50'11")	BY: MPS	
Overall Weight:	Approx. 2,948 kg (6,500 lbs)	BURIAL DEPTH: 7 Ft	
Working Capacity:	Approx. 66,100L (14,540 Imp Gal, 17,448 US Gal)	DATE:	
Overall Capacity:	Approx. 68,656 (15,102 Imp Gal, 18,122 US Gal)	APPROVAL:	

