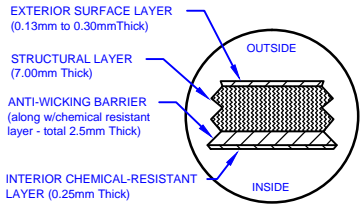


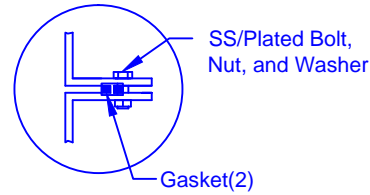
LAMINATE DETAIL



SECTION-JOINT DETAIL

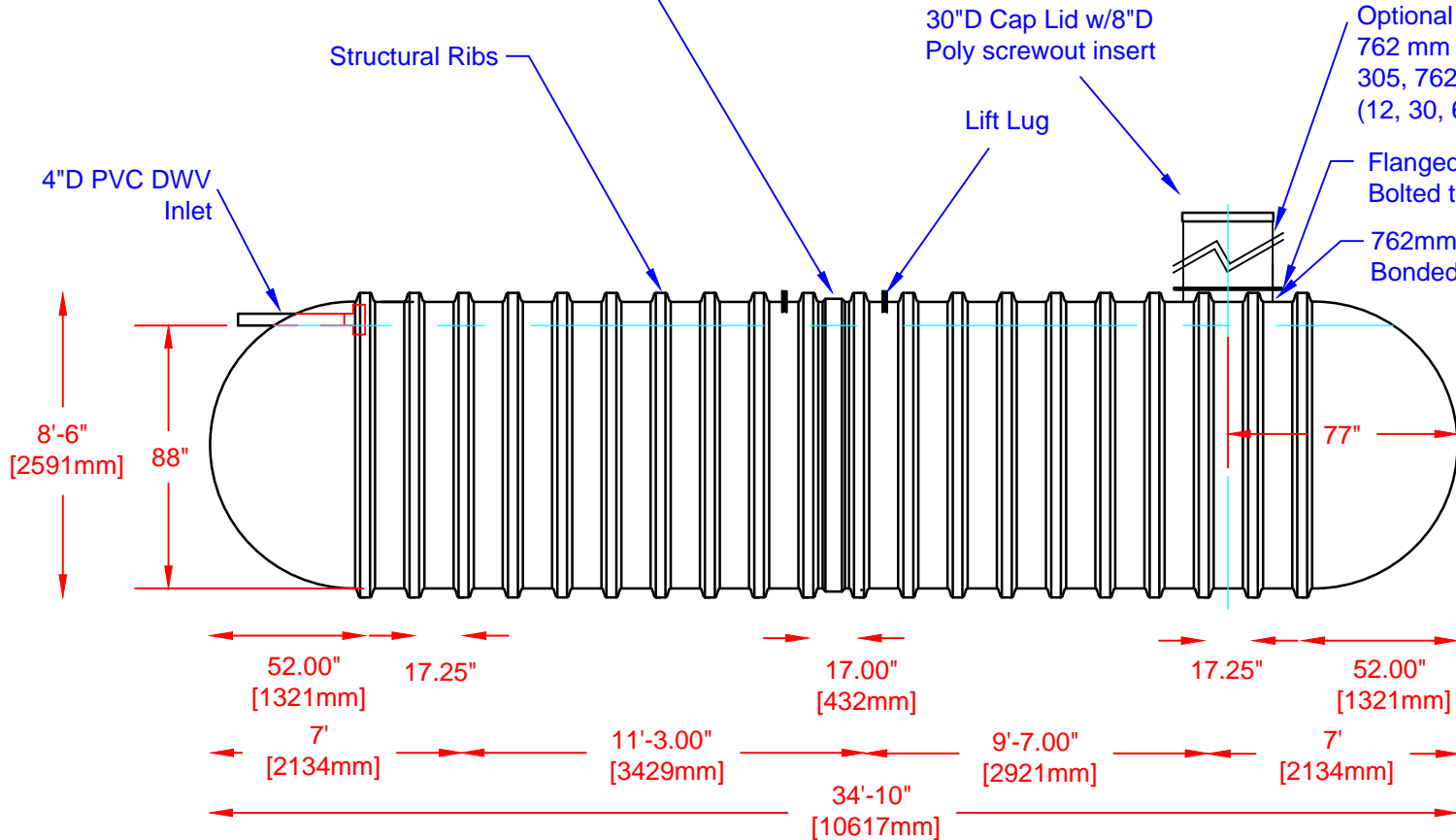


FLANGE CONNECTION DETAIL



Specifications

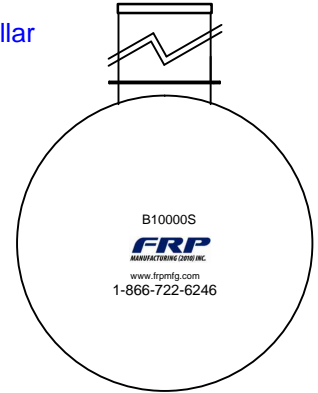
Cylinder Thickness	0.375"	Liquid Depth (holding tank)	88"
End Cap Thickness	0.475"	Septic Chamber Depth	N/A
Inlet Height (C.L.)	90"	Effluent Chamber Depth	N/A
Outlet Height (C.L.)	N/A	Chamber Wall dimensions	
Inlet Diameter	4"	Height:	N/A
Outlet Diameter	N/A	Thickness:	N/A
Rib Dimension (C to C)	17.25"	Opening Diameter:	N/A



Optional Manway:
762 mm (30") dia. X
305, 762, 1524 or 2134 mm
(12, 30, 60 or 84") height

Flanged Manway is Bolted to Collar

762mm (30") dia. Collar Bonded to Tank



Various fittings available including bulkhead fittings, pipe, flanged fittings, vents, etc. at extra cost.



Website: www.frpmsg.com
Toll Free: 1-866-722-6246

B10000S FIBREGLASS SEWAGE HOLDING TANK		DATE: 01-30-2014	REV: 2
Overall Length:	Approx. 10,617mm (34'10")	BY: MPS	
Overall Weight:	Approx. 1,746 kg (3,850 lbs)	BURIAL DEPTH: 7 Ft	
Working Capacity:	Approx. 44,100L (9,700 Imp Gal, 11,640 US Gal)	DATE:	
Overall Capacity:	Approx. 45,770L (10,068 Imp Gal, 12,082 US Gal)	APPROVAL:	

